



650 MHz to 3.31 GHz LTE Antenna, Tilt and Swivel, Monopole, SMA Male Connector

Antennas Technical Data Sheet

PEANRBD1053

Features

- 650-960 / 1937-2498 / 3310 MHz, 1 dBi Gain
- SMA male connector
- Plug and play
- VSWR < 3:1
- Vertical polarization
- Monopole antenna

Applications

- LMR and Public Safety
- Wireless communications
- IOT sensors and trackers
- Wireless microphones
- Remote control
- Industrial monitoring
- Amateur radio
- 2.4 GHz Wi-Fi and ISM applications
- 802.11 a/b/g/n/ax, wireless hotspots
- 5G bands: n5, n8, n12, n13, n14, n18, n20, n26, n28, n30, n34, n40, n53, n65, n71, n81, n82, n83, n85, n89, n91, n92, n93, n94, n95, n97, n100, n105
- 4G LTE bands: B1, B4, B5, B6, B8, B12, B13, B14, B17, B18, B19, B20, B23, B26, B27, B28, B30, B34, B36, B40, B68, B71, B85

Description

The Pasternack PEANRBD1053 antenna is an omni antenna operating from 650 MHz to 3.3 GHz. Our high-quality rubber duck antenna transmits high power signals, increasing the signal strength, thus providing improved coverage, better broadcast control, and faster speed. The SMA male connector on this monopole antenna enables it to be used vertically or at any angle in between.

This PEANRBD1053 tilt-and-swivel LTE antenna is 0.39 inches wide, 3.09 inches long, and 0.39 inches tall. Pasternack's omnidirectional antenna has a maximum input VSWR of 4:1, which results in the best power transfer and reduced losses. This omnidirectional antenna has a vertical polarization and an SMA male connector. Our black antenna functions between -20 to 60 degrees C and has 50 Ohm impedance.

The Pasternack antenna is ideal for LMR, public safety, security, construction, wireless communications, IOT sensors, IOT trackers, wireless microphones, remote control, industrial monitoring and data transmission, amateur radio, WISP applications, 5G wireless network, RFID, 2.4 GHz Wi-Fi and ISM applications, and Bluetooth. This monopole antenna has a sturdy design and a high power handling capacity. Our PEANRBD1053 antenna transmits high power signals, increasing the signal strength, thus providing improved coverage, better broadcast control, and faster speed.

This omni directional LTE antenna is one of the thousands of products available from Pasternack's in-stock inventory with same business day shipment for local, domestic, and international orders. Make your online purchase for our high-quality antennas and take advantage of the same business day shipping services. For further information on similar products, our expert technical support and knowledgeable sales team can help you get the perfect 650 MHz to 3.3 GHz antenna for your requirement.

Configuration

Design	Rubber Duck
Band Type	Single
Radiation Pattern	Omni Directional
Polarization	Vertical
Connector Type	SMA Male

Electrical Specifications

Description	Minimum	Typical	Maximum	Units
-------------	---------	---------	---------	-------

Click the following link (or enter part number in "SEARCH" on website) to obtain additional part information including price, inventory and certifications: [650 MHz to 3.31 GHz LTE Antenna, Tilt and Swivel, Monopole, SMA Male Connector PEANRBD1053](#)



650 MHz to 3.31 GHz LTE Antenna, Tilt and Swivel, Monopole, SMA Male Connector

Antennas Technical Data Sheet

PEANRBD1053

Frequency Range	650	3,310	MHz
Impedance	50		Ohms
Input Power	10		Watts

Specifications by Band

Description	Band 1	Band 2	Band 3	Band 4	Band 5	Units
Range	0.65 to 0.96	1.973 to 2.498	3.31			GHz
Gain	0	1	1.3			dBi
VSWR Max	3:01	3:01	1.7:1			

Mechanical Specifications

Radome Material	ABS
Size	
Overall Length	3.09 in [78.49 mm]
Width	0.39 in [9.91 mm]
Height	0.39 in [9.91 mm]
Weight	0.01804 lbs [8.18 g]

Environmental Specifications

Temperature	
Operating Range	-20 to +60 deg C
Storage Range	-30 to +70 deg C
Environment	Waterproof
Ingress Protection	IP65

Compliance Certifications (see [product page](#) for current document)

Plotted and Other Data

Notes:

Click the following link (or enter part number in "SEARCH" on website) to obtain additional part information including price, inventory and certifications: [650 MHz to 3.31 GHz LTE Antenna, Tilt and Swivel, Monopole, SMA Male Connector PEANRBD1053](#)



650 MHz to 3.31 GHz LTE Antenna, Tilt and Swivel, Monopole, SMA Male Connector

Antennas Technical Data Sheet

PEANRBD1053

650 MHz to 3.31 GHz LTE Antenna, Tilt and Swivel, Monopole, SMA Male Connector from Pasternack Enterprises has same day shipment for domestic and International orders. Our RF, microwave and millimeter wave products maintain a 99.4% availability and are part of the broadest selection in the industry.

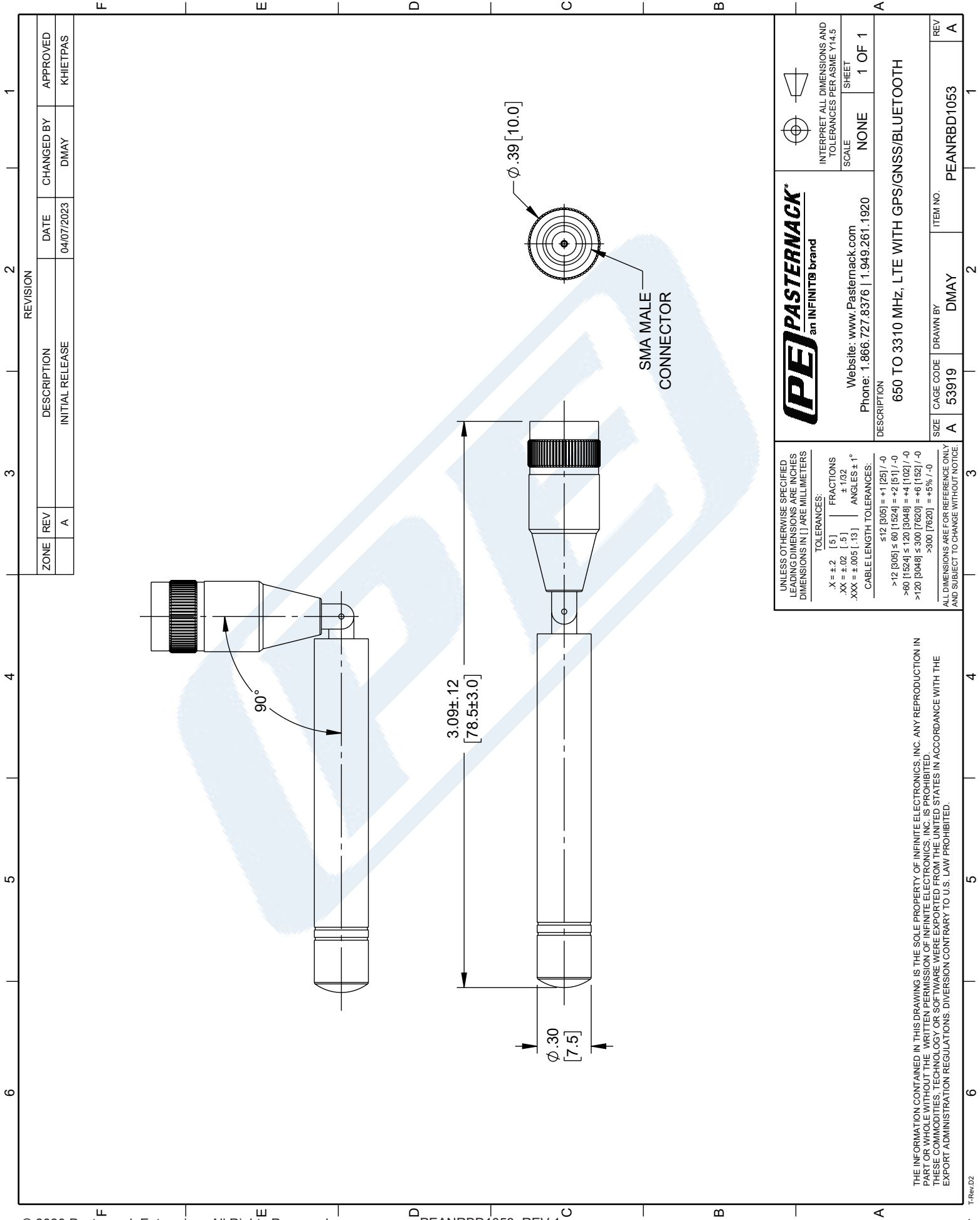
Click the following link (or enter part number in "SEARCH" on website) to obtain additional part information including price, inventory and certifications: [650 MHz to 3.31 GHz LTE Antenna, Tilt and Swivel, Monopole, SMA Male Connector PEANRBD1053](#)

URL:

The information contained in this document is accurate to the best of our knowledge and representative of the part described herein. It may be necessary to make modifications to the part and/or the documentation of the part, in order to implement improvements. Pasternack reserves the right to make such changes as required. Unless otherwise stated, all specifications are nominal. Pasternack does not make any representation or warranty regarding the suitability of the part described herein for any particular purpose, and Pasternack does not assume any liability arising out of the use of any part or documentation.

PEANRBD1053 CAD Drawing

650 MHz to 3.31 GHz LTE Antenna, Tilt and Swivel, Monopole, SMA Male Connector



ZONE	REV	DESCRIPTION	DATE	CHANGED BY	APPROVED
	A	INITIAL RELEASE	04/07/2023	DMAY	KHIETPAS

		INTERPRET ALL DIMENSIONS AND TOLERANCES PER ASME Y14.5 SCALE: NONE SHEET: 1 OF 1	
Website: www.Pasternack.com Phone: 1.866.727.8376 1.949.261.1920		DESCRIPTION: 650 TO 3310 MHz, LTE WITH GPS/GNSS/BLUETOOTH	
SIZE	CAGE CODE	DRAWN BY	ITEM NO.
A	53919	DMAY	PEANRBD1053

UNLESS OTHERWISE SPECIFIED LEADING DIMENSIONS ARE INCHES DIMENSIONS IN [] ARE MILLIMETERS

TOLERANCES:
 .X = ±.2 [5] FRACTIONS ±.1032
 .XX = ±.02 [.5] ANGLES ± 1°
 .XXX = ±.005 [.13]
 CABLE LENGTH TOLERANCES:
 ≤12 [305] = +1 [25] / -0
 >12 [305] ≤ 60 [1524] = +2 [51] / -0
 >60 [1524] ≤ 120 [3048] = +4 [102] / -0
 >120 [3048] ≤ 300 [7620] = +6 [152] / -0
 >300 [7620] = +5% / -0

ALL DIMENSIONS ARE FOR REFERENCE ONLY AND SUBJECT TO CHANGE WITHOUT NOTICE.

THE INFORMATION CONTAINED IN THIS DRAWING IS THE SOLE PROPERTY OF INFINITE ELECTRONICS, INC. ANY REPRODUCTION IN PART OR WHOLE WITHOUT THE WRITTEN PERMISSION OF INFINITE ELECTRONICS, INC. IS PROHIBITED. THESE COMMODITIES, TECHNOLOGY OR SOFTWARE WERE EXPORTED FROM THE UNITED STATES IN ACCORDANCE WITH THE EXPORT ADMINISTRATION REGULATIONS. DIVERSION CONTRARY TO U.S. LAW PROHIBITED.