



2dB RF fixed attenuator 10W, DC to 4GHz, BNC male to BNC female

## RF Fixed Attenuators Technical Data Sheet

**PE7610-2**

### Features

- Bidirectional
- DC to 4 GHz Range
- Attenuation 2 +/- 0.5 dB
- 10 Watts Average Input Power
- VSWR <1.25:1

### Applications

- Precision Measurements
- Production Systems
- Instrumentation
- Prototyping and Characterization

### Description

Pasternack carries a wide range of fixed attenuators with a broad selection of attenuation levels, frequency ranges, and power dissipation ranges. RF microwave attenuators (also known as RF pads) lower the amplitude of a signal (attenuate) a known amount and can be used in a wide variety of applications. These attenuators pads are used when a signal needs to be reduced to protect measurement equipment or other circuitry, to extend the range of power meters and amplifiers, and to impedance match circuits by reducing the VSWR seen by adjacent components. RF attenuators can prevent signal overload in amplifiers, receivers and detectors, adjusting the signal level to a range that is optimal.

Few RF components are as commonly used as fixed coaxial attenuators, and Pasternack carries one of the largest in-stock varieties and ships them same day. The 2 dB Fixed Attenuators PE7610-2 is rated to 10 Watts and operates from DC to 4 GHz. The versatile coaxial package uses BNC male to BNC female connectors and is also REACH and RoHS compliant.

### Electrical Specifications

Description	Minimum	Typical	Maximum	Units
Frequency Range	DC		4	GHz
Impedance		50		Ohms
Nominal Attenuation		2		dB
VSWR			1.25:1	
Input Power, CW			10	Watts
Input Power, Peak 5µs pulse w/ 1% duty cycle			1	kWatts

Click the following link (or enter part number in "SEARCH" on website) to obtain additional part information including price, inventory and certifications: [2dB RF fixed attenuator 10W, DC to 4GHz, BNC male to BNC female PE7610-2](#)



2dB RF fixed attenuator 10W, DC to 4GHz, BNC male to BNC female

## RF Fixed Attenuators Technical Data Sheet

**PE7610-2**

### Mechanical Specifications

#### Size

Length	2.7559 in [70 mm]
Width/Diameter	1.49606 in [38 mm]
Height	1.49606 in [38 mm]
Weight	0.08 lbs [36.29 g]
Body Material and Plating	Black Anodized Aluminum

#### Configuration

Design	Fixed, Bidirectional
--------	----------------------

#### Connectors

Description	Connector 1	Connector 2
Type	BNC Male	BNC Female
Contact Material and Plating	Brass, Gold	Beryllium Copper, Gold
Body Material and Plating	Brass, Nickel	Brass, Nickel

### Environmental Specifications

#### Temperature

Operating Range	+125 to -55 deg C
-----------------	-------------------

**Compliance Certifications** (see [product page](#) for current document)

### Plotted and Other Data

Notes:

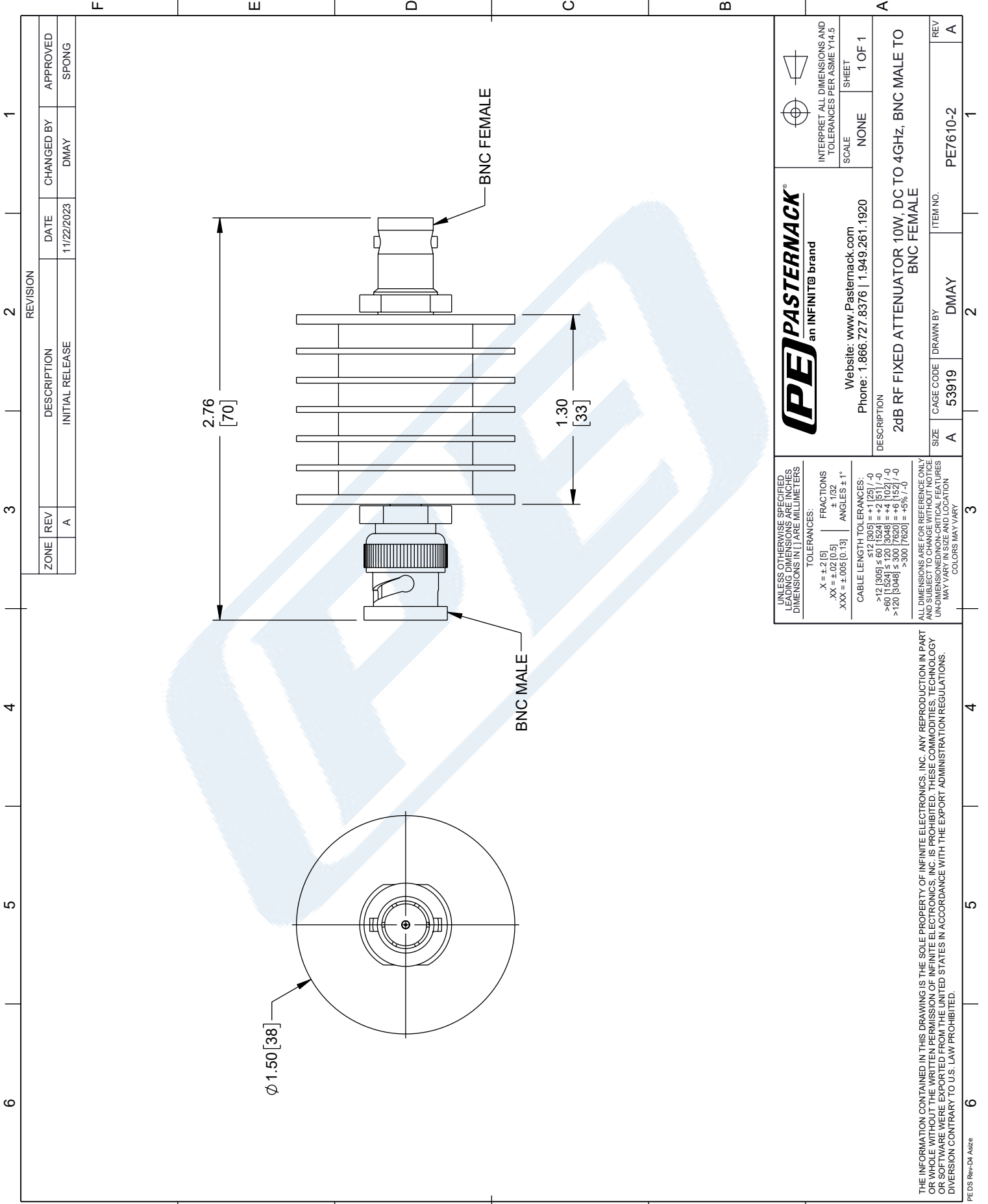
2dB RF fixed attenuator 10W, DC to 4GHz, BNC male to BNC female from Pasternack Enterprises has same day shipment for domestic and International orders. Our RF, microwave and millimeter wave products maintain a 99.4% availability and are part of the broadest selection in the industry.

Click the following link (or enter part number in "SEARCH" on website) to obtain additional part information including price, inventory and certifications: [2dB RF fixed attenuator 10W, DC to 4GHz, BNC male to BNC female PE7610-2](#)

URL:

# PE7610-2 CAD Drawing

2dB RF fixed attenuator 10W, DC to 4GHz, BNC male to BNC female



		INTERPRET ALL DIMENSIONS AND TOLERANCES PER ASME Y14.5
SCALE	NONE	SHEET 1 OF 1

		Website: <a href="http://www.Pasternack.com">www.Pasternack.com</a> Phone: 1.866.727.8376   1.949.261.1920
DESCRIPTION		
2dB RF FIXED ATTENUATOR 10W, DC TO 4GHZ, BNC MALE TO BNC FEMALE		
SIZE	A	53919
CAGE CODE	DMAY	
DRAWN BY	DMAY	
ITEM NO.	PE7610-2	
REV	A	

UNLESS OTHERWISE SPECIFIED LEADING DIMENSIONS ARE INCHES DIMENSIONS IN [ ] ARE MILLIMETERS

TOLERANCES:

X = ±.2 [5]	FRACTIONS ± 1/32
XX = ±.02 [0.5]	ANGLES ± 1°
XXX = ±.005 [0.13]	

CABLE LENGTH TOLERANCES:

≤ 12 [305]	± .125 [3.175]
> 12 [305] ≤ 60 [1524]	± .25 [6.35]
> 60 [1524] ≤ 120 [3048]	± .5 [12.7]
> 120 [3048] ≤ 300 [7620]	± 1.0 [25.4]
> 300 [7620]	± 2.0 [50.8]

ALL DIMENSIONS ARE FOR REFERENCE ONLY AND SUBJECT TO CHANGE WITHOUT NOTICE UNLESS OTHERWISE SPECIFIED. DIMENSIONS MAY VARY IN SIZE AND LOCATION. COLORS MAY VARY.

THE INFORMATION CONTAINED IN THIS DRAWING IS THE SOLE PROPERTY OF INFINITE ELECTRONICS, INC. ANY REPRODUCTION IN PART OR WHOLE WITHOUT THE WRITTEN PERMISSION OF INFINITE ELECTRONICS, INC. IS PROHIBITED. THESE COMMODITIES, TECHNOLOGY OR SOFTWARE WERE EXPORTED FROM THE UNITED STATES IN ACCORDANCE WITH THE EXPORT ADMINISTRATION REGULATIONS. DIVERSION CONTRARY TO U.S. LAW PROHIBITED.