



2 Watts Low Power WR-75 Waveguide Load  
10 GHz to 15 GHz, Aluminum

## Waveguide Terminations Technical Data Sheet

PE6805

### Electrical Specifications

Description	Minimum	Typical	Maximum	Units
Frequency Range	10		15	GHz
VSWR			1.2:1	
Input Power (CW)			2	Watts
Input Power (Peak)			100	Watts

### Mechanical Specifications

<b>Size</b>	
Length	1 in [25.4 mm]
Width/Dia.	1.5 in [38.1 mm]
Height	1.5 in [38.1 mm]
Weight	0.0913 lbs [41.41 g]

Description	Flange	Waveguide
Designation	None	WR-75
Type	Square Cover	
Material		Aluminum

### Environmental Specifications

**Compliance Certifications** (see [product page](#) for current document)

### Plotted and Other Data

Notes:

2 Watts Low Power WR-75 Waveguide Load 10 GHz to 15 GHz, Aluminum from Pasternack Enterprises has same day shipment for domestic and International orders. Our RF, microwave and millimeter wave products maintain a 99.4% availability and are part of the broadest selection in the industry.

Click the following link (or enter part number in "SEARCH" on website) to obtain additional part information including price, inventory and certifications: [2 Watts Low Power WR-75 Waveguide Load 10 GHz to 15 GHz, Aluminum PE6805](#)

Click the following link (or enter part number in "SEARCH" on website) to obtain additional part information including price, inventory and certifications: [2 Watts Low Power WR-75 Waveguide Load 10 GHz to 15 GHz, Aluminum PE6805](#)



2 Watts Low Power WR-75 Waveguide Load  
10 GHz to 15 GHz, Aluminum

## Waveguide Terminations Technical Data Sheet

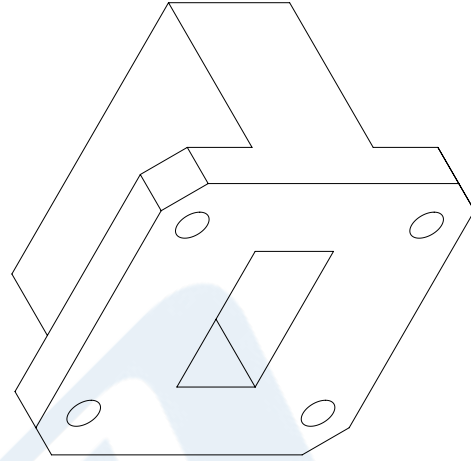
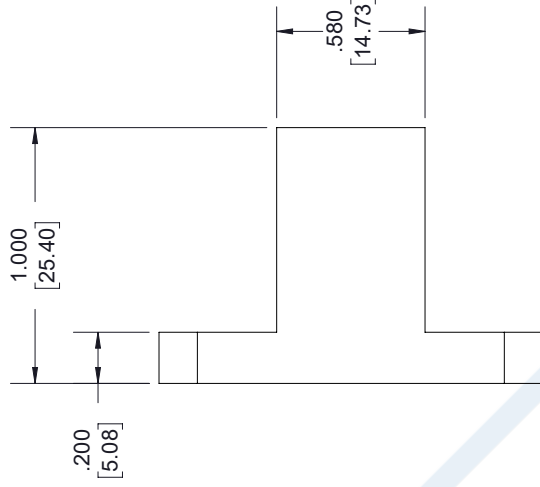
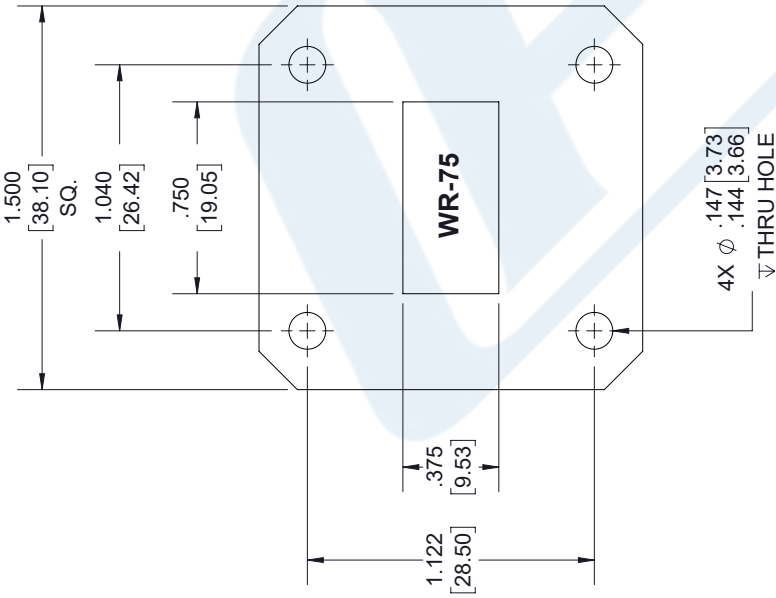
PE6805

URL: <https://www.pasternack.com/waveguide-termination-frequency-range-1000-1500-ghz-pe6805-p.aspx>

The information contained in this document is accurate to the best of our knowledge and representative of the part described herein. It may be necessary to make modifications to the part and/or the documentation of the part, in order to implement improvements. Pasternack reserves the right to make such changes as required. Unless otherwise stated, all specifications are nominal. Pasternack does not make any representation or warranty regarding the suitability of the part described herein for any particular purpose, and Pasternack does not assume any liability arising out of the use of any part or documentation.

# PE6805 CAD Drawing

2 Watts Low Power WR-75 Waveguide Load 10 GHz to 15 GHz, Aluminum



## LABEL



## STANDARD TOLERANCES

.X ±0.2  
.XX ±0.01  
.XXX ±0.005

\*STANDARD TOLERANCES APPLY ONLY TO DIMENSIONS IN INCHES



Pasternack Enterprises, Inc.  
P.O. Box 16759 | Irvine | CA | 92623

Phone: (949) 261-1920 | Fax: (949) 261-7451

Website: www.pasternack.com | E-Mail: sales@pasternack.com

## DWG TITLE

PE6805

NOTES:  
1. UNLESS OTHERWISE SPECIFIED ALL DIMENSIONS ARE NOMINAL.  
2. ALL SPECIFICATIONS ARE SUBJECT TO CHANGE WITHOUT NOTICE AT ANY TIME.  
3. DIMENSIONS ARE IN INCHES [mm].

CAGE CODE 53919

CAD FILE 10/09/18

SCALE N/A

SIZE A

7361