



0.5 Watt RF Load Up to 40 GHz With Mini SMP Male
Full Detent Input Gold Plated Beryllium Copper

RF Terminations Technical Data Sheet

PE6163

Features

- DC to 40 GHz Frequency Range
- VSWR 1.35:1 Max
- Max Power 0.5 Watt (CW)
- Mini SMP Male Full Detent Coaxial Interface

Applications

- Wireless
- Radar Systems
- Commercial and Military Communication
- SatCom
- Test and Measurement

Description

Pasternack's PE6163 is an RF termination (also called RF load or dummy load) that operates from DC to 40 GHz and handles up to 0.5 Watt (CW). Our Mini SMP termination / load has a male gender Full Detent. PE6163 Mini SMP load termination offers 1.35:1 max VSWR.

RF load / terminations are indispensable components in many RF, microwave and millimeter wave systems where signal reflection from unused ports can potentially damage the device or reduce the signal integrity. By using a terminator on an unused port with a matched load (dummy load), the incident energy will be absorbed with minimal reflection. These termination components are commonly used to terminate devices such as couplers, circulators, and switches. They are also widely used in measurement systems to ensure accurate results. Pasternack offers a huge selection of RF, microwave and millimeter wave terminations up to 65 GHz with excellent performance over the entire operating range and power handling capabilities up to 800 Watt (CW).

Electrical Specifications

Description	Minimum	Typical	Maximum	Units
Frequency Range	DC		40	GHz
Impedance		50		Ohms
VSWR			1.35:1	
Input Power (CW)			0.5	Watts

Mechanical Specifications

Size

- Length: 0.33 in [8.38 mm]
- Width: 0.14 in [3.56 mm]
- Height: 0 in [0 mm]
- Weight: 0.0021 lbs [0.95 g]

Configuration

- Connector: Push-On Mini SMP Male Full Detent

Click the following link (or enter part number in "SEARCH" on website) to obtain additional part information including price, inventory and certifications: [0.5 Watt RF Load Up to 40 GHz With Mini SMP Male Full Detent Input Gold Plated Beryllium Copper PE6163](#)



0.5 Watt RF Load Up to 40 GHz With Mini SMP Male
Full Detent Input Gold Plated Beryllium Copper

RF Terminations Technical Data Sheet

PE6163

Material Specifications

Description	Material	Plating
Connector 1 Contact		Gold
Insulation	PTFE	
Body	Beryllium Copper	Gold
Housing	Beryllium Copper	Gold

Compliance Certifications (see [product page](#) for current document)

Plotted and Other Data

Notes:

0.5 Watt RF Load Up to 40 GHz With Mini SMP Male Full Detent Input Gold Plated Beryllium Copper from Pasternack Enterprises has same day shipment for domestic and International orders. Our RF, microwave and millimeter wave products maintain a 99.4% availability and are part of the broadest selection in the industry.

Click the following link (or enter part number in "SEARCH" on website) to obtain additional part information including price, inventory and certifications: [0.5 Watt RF Load Up to 40 GHz With Mini SMP Male Full Detent Input Gold Plated Beryllium Copper PE6163](#)

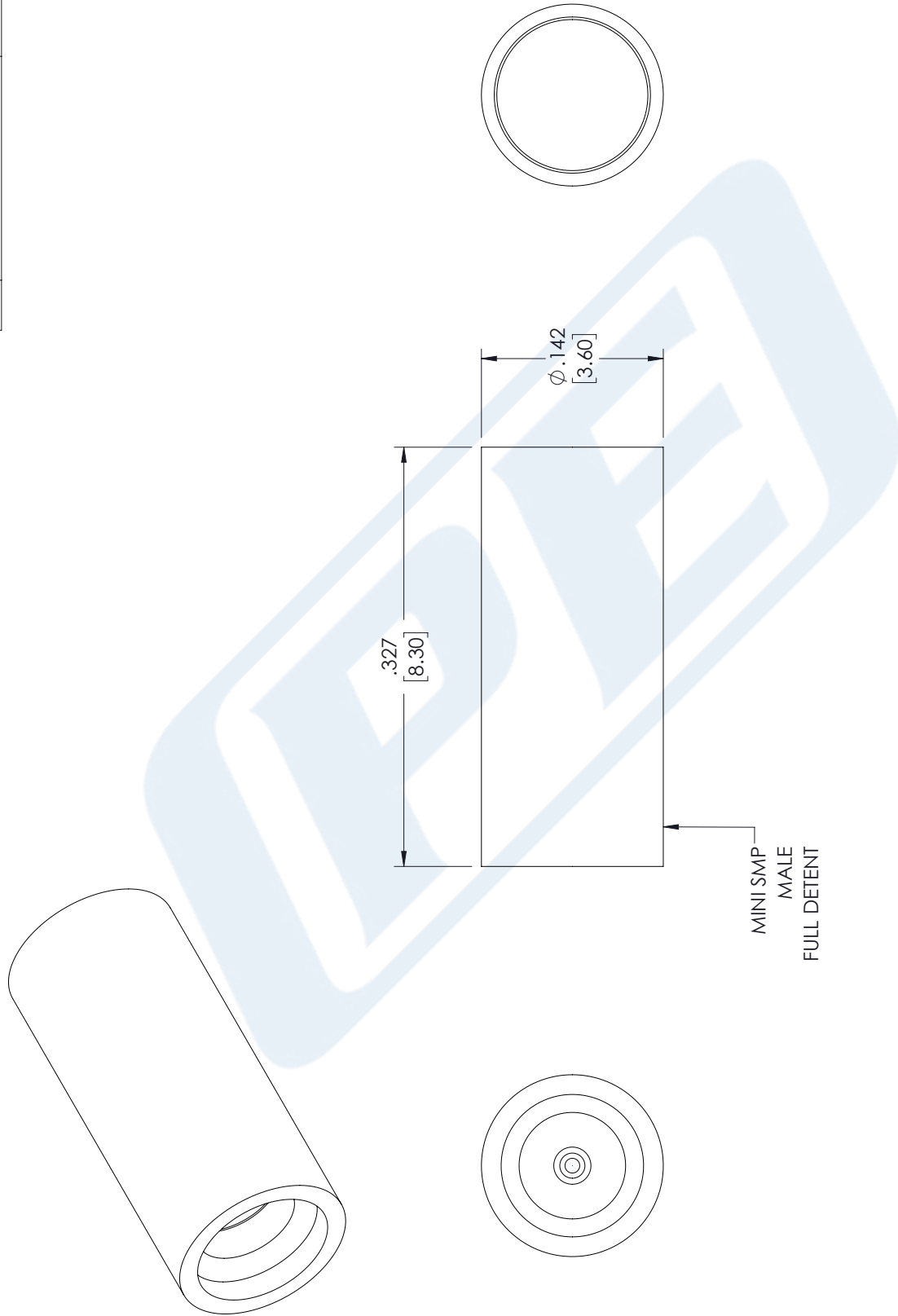
URL: <https://www.pasternack.com/mini-smp-male-termination-05-watt-40-ghz-pe6163-p.aspx>

The information contained in this document is accurate to the best of our knowledge and representative of the part described herein. It may be necessary to make modifications to the part and/or the documentation of the part, in order to implement improvements. Pasternack reserves the right to make such changes as required. Unless otherwise stated, all specifications are nominal. Pasternack does not make any representation or warranty regarding the suitability of the part described herein for any particular purpose, and Pasternack does not assume any liability arising out of the use of any part or documentation.

PE6163 CAD Drawing

0.5 Watt RF Load Up to 40 GHz With Mini SMP Male Full Detent Input Gold Plated Beryllium Copper

REVISIONS			
REV.	DESCRIPTION	DATE	APPROVED
B	PCR PE6163 20220607	6/13/22	DCLEMENT



UNLESS OTHERWISE SPECIFIED
LEADING DIMENSIONS ARE INCHES
DIMENSIONS IN [] ARE MILLIMETERS

TOLERANCES:

.X = ±.2	[5.08]	FRACTIONS
.XX = ±.02	[.51]	± 1/32
.XXX = ±.005	[.13]	ANGLES ± 1°

CABLE LENGTH (L) TOLERANCES:

L ≤ 12	[305]	= +1 [25] / -0
12 [305] < L ≤ 60	[1524]	= +2 [51] / -0
60 [1524] < L ≤ 120	[3048]	= +4 [102] / -0
120 [3048] < L ≤ 300	[7620]	= +6 [152] / -0
300 [7620] < L		= +5%L / -0

ALL DIMENSIONS SHOWN
ARE FOR REFERENCE ONLY.

(PE) PASTERNAK
an INFINITI® brand

Pasternack Enterprises, Inc.
P.O. Box 16759, Irvine, CA 92623.
Phone: 1.949.261.1920 | 1.866.727.8376
Fax: 1.949.261.7451
Website: www.pasternack.com
E-mail: sales@pasternack.com

SIZE: A CAGE CODE: 53919 DRAWN BY: HBAKKE ITEM NO.: PE6163

THIRD-ANGLE PROJECTION

THE INFORMATION AND DESIGN IN THIS DOCUMENT IS THE PROPERTY OF PASTERNAK CORPORATION. ALL RIGHTS RESERVED.

SHEET 1 OF 1

SCALE N/A

REV B