



902-928 MHz 12 dBi two-port dual pol sector antenna

Antennas Technical Data Sheet

PE51FP1009

Features

- All weather operation and high power handling design
- Dual X-Polarized (45° H and 45°V) Antenna
- -2 to 10 degree Down-Tilt Mounting Bracket
- N-female connectors
- Includes Mast Mounting Hardware

Applications

- SCADA
- 900 MHz ISM/GSM
- RFID
- ZigBee
- WLAN, LPWAN, IoT, M2M

Description

The PE51FP1009 is a two-port high gain sector antenna. It provides dual polarization (45° H and 45°V). It includes an adjustable tilt-mount bracket.

Configuration

Design	Sector
Band Type	Dual
Radiation Pattern	Directional
Polarization	Vertical/Horizontal
Cable Type	Coax lead
Connector Type	N Female
Interface 2	N Female
Number of Ports	2
Lightning Protection	DC Short

Electrical Specifications

Description	Minimum	Typical	Maximum	Units
Frequency Range	902		928	MHz
Input VSWR		1.3:1	1.5:1	
Impedance		50		Ohms
Gain		12.5		dBi
Input Power			50	Watts

Specifications by Band

Description	Band 1	Band 2	Band 3	Band 4	Band 5	Units
Range	902-928					MHz
Center Frequency	915					MHz
Gain	12.5					dBi
Horizontal Beam Width	120					Degees
Vertical Beam Width	13.5					Degees
Maximum Input Power	50					Watts

Click the following link (or enter part number in "SEARCH" on website) to obtain additional part information including price, inventory and certifications: [902-928 MHz 12 dBi two-port dual pol sector antenna PE51FP1009](#)



902-928 MHz 12 dBi two-port dual pol sector antenna

Antennas Technical Data Sheet

PE51FP1009

Mechanical Specifications

Radome Material	PVC
Size	
Overall Length	5 in [127 mm]
Width	11 in [279.4 mm]
Height	49 in [124.46 cm]
Mounting Mast Diameter	1.25 to 3.5 in [31.75 to 88.90 mm]
Weight	10 lbs [4.54 kg]

Environmental Specifications

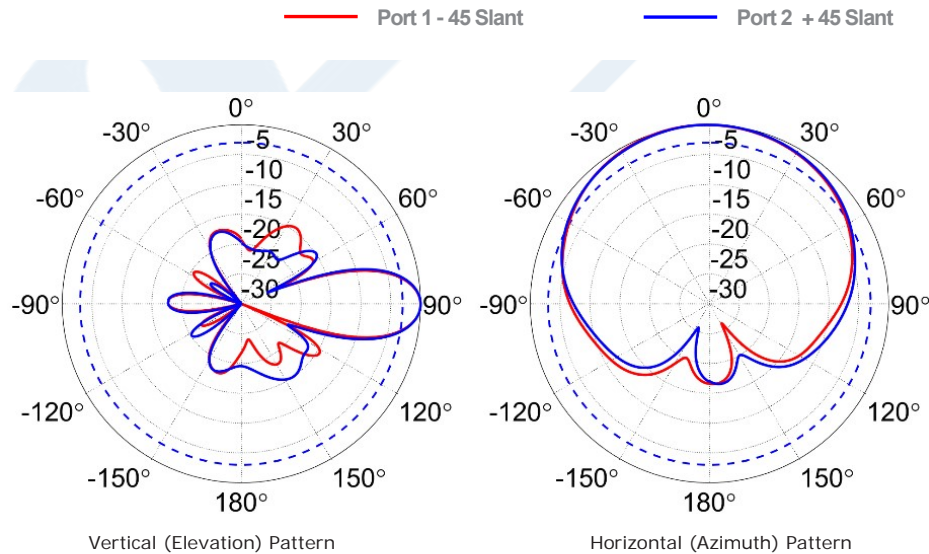
Temperature	
Operating Range	-40 to +90 deg C
Wind Loading	100 MPH [160.93 KPH]
ESD Protection	IP55

Compliance Certifications (see [product page](#) for current document)

Plotted and Other Data

Notes:

RF Antenna Gain Patterns



Click the following link (or enter part number in "SEARCH" on website) to obtain additional part information including price, inventory and certifications: [902-928 MHz 12 dBi two-port dual pol sector antenna PE51FP1009](#)



902-928 MHz 12 dBi two-port dual pol sector antenna

Antennas Technical Data Sheet

PE51FP1009

902-928 MHz 12 dBi two-port dual pol sector antenna from Pasternack Enterprises has same day shipment for domestic and International orders. Our RF, microwave and millimeter wave products maintain a 99.4% availability and are part of the broadest selection in the industry.

Click the following link (or enter part number in "SEARCH" on website) to obtain additional part information including price, inventory and certifications: [902-928 MHz 12 dBi two-port dual pol sector antenna PE51FP1009](https://www.pasternack.com/dual-antenna-902-928-mhz-12.5-dbi-gain-n-pe51fp1009-p.aspx)

URL: <https://www.pasternack.com/dual-antenna-902-928-mhz-12.5-dbi-gain-n-pe51fp1009-p.aspx>

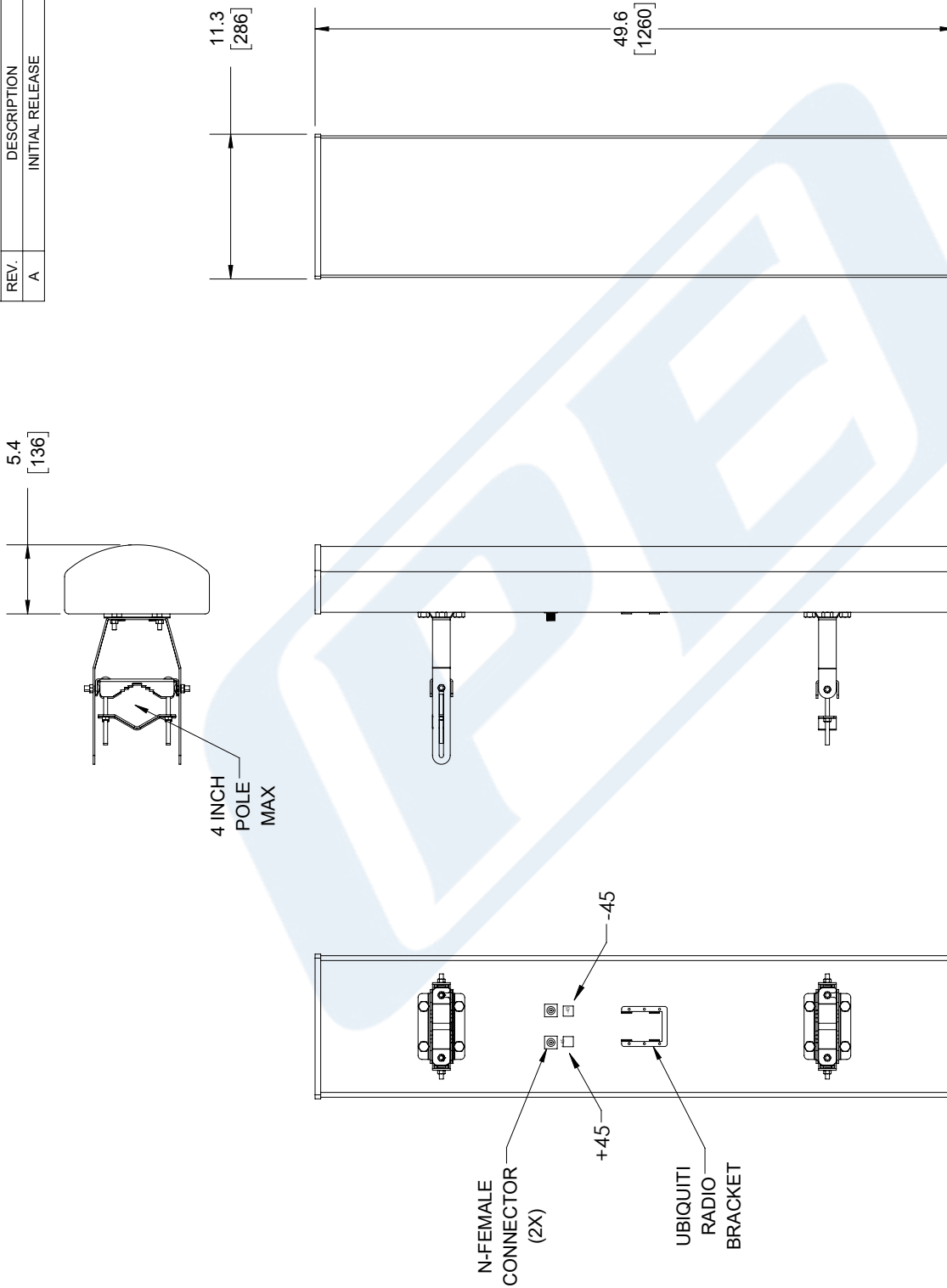
The information contained in this document is accurate to the best of our knowledge and representative of the part described herein. It may be necessary to make modifications to the part and/or the documentation of the part, in order to implement improvements. Pasternack reserves the right to make such changes as required. Unless otherwise stated, all specifications are nominal. Pasternack does not make any representation or warranty regarding the suitability of the part described herein for any particular purpose, and Pasternack does not assume any liability arising out of the use of any part or documentation.

PE51FP1009 CAD Drawing

902-928 MHz 12 dBi two-port dual pol sector antenna

REV.	DESCRIPTION	DATE	APPROVED
A	INITIAL RELEASE	2/12/2020	M.MILLER

REVISIONS			
REV.	DESCRIPTION	DATE	APPROVED
A	INITIAL RELEASE	2/12/2020	M.MILLER



THIRD-ANGLE PROJECTION

THE INFORMATION AND DESIGN IN THIS DOCUMENT IS THE PROPERTY OF PASTERNAK CORPORATION. ALL RIGHTS RESERVED.

SHEET 1 OF 1

SCALE N/A

PE PASTERNAK
an INFINITI brand

Pasternack Enterprises, Inc.
P. O. Box 16759, Irvine, CA 92623.
Phone: 1.949.261.1920 | 1.866.727.8376
Fax: 1.949.261.7451
Website: www.pasternack.com
E-mail: sales@pasternack.com

UNLESS OTHERWISE SPECIFIED LEADING DIMENSIONS ARE INCHES DIMENSIONS IN [] ARE MILLIMETERS

TOLERANCES:

.X = ±.2 [5.08]	FRACTIONS ± 1/32
.XX = ±.02 [.51]	ANGLES ± 1°
.XXX = ±.005 [.13]	

CABLE LENGTH (L) TOLERANCES:

L ≤ 12 [305]	±.1 [25]
12 [305] < L ≤ 60 [1524]	±.2 [51]
60 [1524] < L ≤ 120 [3048]	±.4 [102]
120 [3048] < L ≤ 300 [7620]	±.6 [152]
300 [7620] < L	±.9% L / -0

ALL DIMENSIONS SHOWN ARE FOR REFERENCE ONLY.

SIZE [CAGE CODE] DRAWN BY [ITEM NO]

A 53919 K.DANG PE51FP1009

REV A

THESE COMMODITIES, TECHNOLOGY OR SOFTWARE WERE EXPORTED FROM THE UNITED STATES IN ACCORDANCE WITH THE EXPORT ADMINISTRATION REGULATIONS. DIVERSION CONTRARY TO U.S. LAW PROHIBITED.