



## LC Male Connector Clamp/Solder Attachment for RG218, RG219, RG17

### RF Connectors Technical Data Sheet

PE4323

#### Configuration

- LC Male Connector
- MIL-STD-348
- 50 Ohms
- Straight Body Geometry
- RG218, RG219, RG17 Interface Type
- Clamp/Solder Attachment
- 1 1/2 inch Hex

#### Features

- Max. Operating Frequency 1,000 MHz
- Silver Plated Beryllium Copper Contact
- Contact plating according to ASTM-B700

#### Applications

- General Purpose Test
- Custom Cable Assemblies

#### Description

Pasternack's PE4323 LC male connector with clamp/solder attachment for RG218, RG219 and RG17 is part of our full line of RF components available for same-day shipping. Our LC male connector operates up to a maximum frequency of 1,000 MHz.

Our LC male connector PE4323 datasheet specifications and drawing with dimensions are shown below in this PDF. Pasternack's broad catalog of RF, microwave and millimeter wave connectors allows designers to configure and customize their signal connections however they like. Whether the need is to provide an I/O for a board design, or simply create a custom cable assembly configuration, Pasternack has the right connector for the job. Pasternack can also expertly build your custom cable assemblies for you and ship same-day.

#### Electrical Specifications

Description	Minimum	Typical	Maximum	Units
Frequency Range	DC		1,000	MHz
Operating Voltage (AC)			5,000	Vrms
Dielectric Withstanding Voltage (AC)			5,000	Vrms

#### Mechanical Specifications

##### Size

Length	3.95 in [100.33 mm]
Width/Dia.	1.5 in [38.10 mm]
Weight	0.84 lbs [381.02 g]

Click the following link (or enter part number in "SEARCH" on website) to obtain additional part information including price, inventory and certifications: [LC Male Connector Clamp/Solder Attachment for RG218, RG219, RG17 PE4323](#)



## LC Male Connector Clamp/Solder Attachment for RG218, RG219, RG17

### RF Connectors Technical Data Sheet

PE4323

#### Material Specifications

Description	Material	Plating
Contact	Beryllium Copper	Silver ASTM-B700
Body	Phosphor Bronze	Nickel ASTM-B689
Coupling Nut	Brass	Nickel ASTM-B689

#### Environmental Specifications

##### Temperature

Operating Range -65 to +165 deg C

**Compliance Certifications** (see [product page](#) for current document)

#### Plotted and Other Data

Notes:

LC Male Connector Clamp/Solder Attachment for RG218, RG219, RG17 from Pasternack Enterprises has same day shipment for domestic and International orders. Our RF, microwave and millimeter wave products maintain a 99% availability and are part of the broadest selection in the industry.

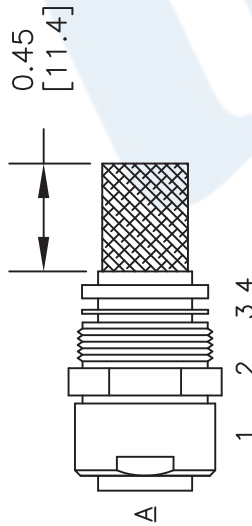
Click the following link (or enter part number in "SEARCH" on website) to obtain additional part information including price, inventory and certifications: [LC Male Connector Clamp/Solder Attachment for RG218, RG219, RG17 PE4323](#)

URL: <https://www.pasternack.com/lc-male-standard-rg218-rg219-connector-pe4323-p.aspx>

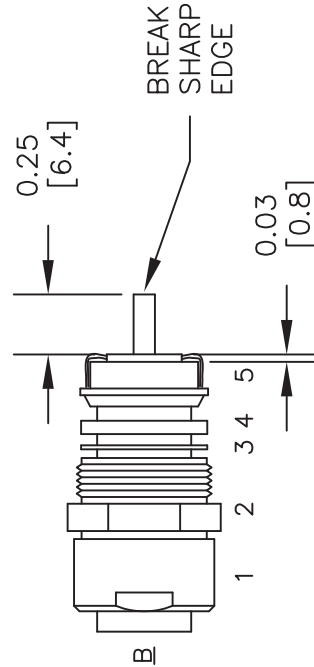
The information contained in this document is accurate to the best of our knowledge and representative of the part described herein. It may be necessary to make modifications to the part and/or the documentation of the part, in order to implement improvements. Pasternack reserves the right to make such changes as required. Unless otherwise stated, all specifications are nominal. Pasternack does not make any representation or warranty regarding the suitability of the part described herein for any particular purpose, and Pasternack does not assume any liability arising out of the use of any part or documentation.

**ASSEMBLY PROCEDURES**

1. SLIDE CLAMP NUT (1), EXTENSION (2), WASHER (3) & GASKET (4) OVER CABLE. STRIP CABLE AS SHOWN IN A. DO NOT NICK BRAID. WHILE CUTTING JACKET COMB OUT BRAID. TAPER END OF BRAID TO PERMIT ASSEMBLY OF BRAID CLAMP (5). SLIDE BRAID CLAMP (5) OVER BRAID & SEAT AGAINST CABLE.

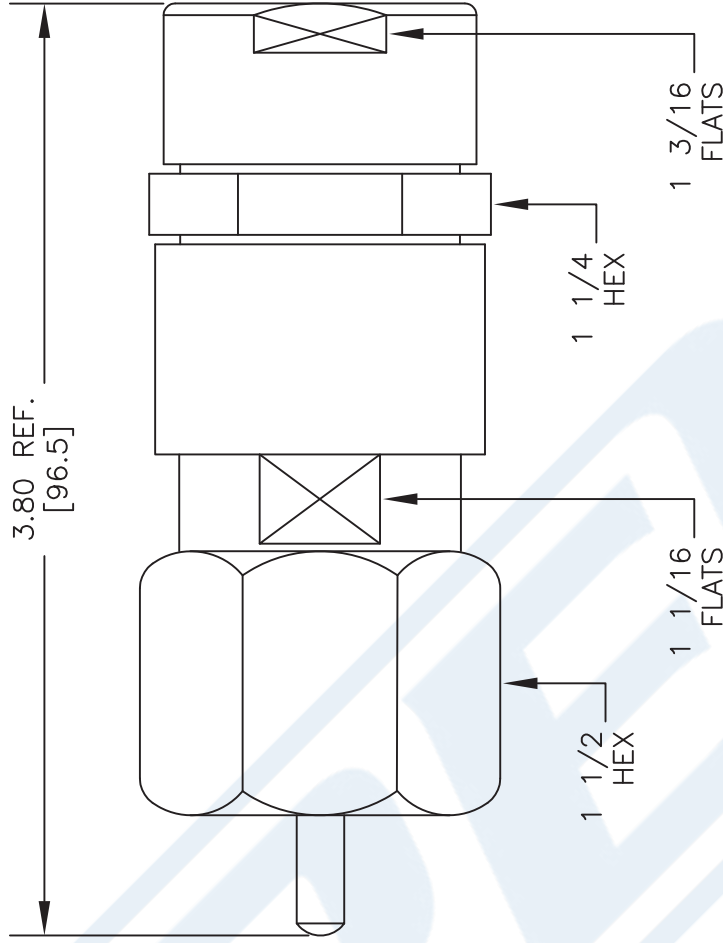


2. FORM BRAID OVER BRAID CLAMP NUT (5). TRIM BRAID BACK TO SHOULDER. CUT DIELECTRIC & CENTER CONDUCTOR TO DIMENSION SHOWN IN B. DO NOT NICK CENTER CONDUCTOR. INSERT #12 ALLEN WRENCH INTO SELF-TAPPING CONTACT. THREAD THE SELF-TAPPING CONTACT ONTO CENTER CONDUCTOR UNTIL IT SEATS AGAINST DIELECTRIC. SCREW CONTACT & CABLE ASSEMBLY INTO INSULATOR IN BODY. TIGHTEN BODY & EXTENSION (2) TOGETHER SECURELY. \* THEN TIGHTEN CLAMP NUT (1) TO EXTENSION (2).



**NOTE**

RG219 STRAIGHTEN BULGE IN CLAMP NUT (1) & CUT IT SO THAT IT CAN BE CLAMPED TOGETHER TO EXTENSION (2).



DWG TITLE

**PE4323**

NOTES:  
 1. UNLESS OTHERWISE SPECIFIED ALL DIMENSIONS ARE NOMINAL.  
 2. ALL SPECIFICATIONS ARE SUBJECT TO CHANGE WITHOUT NOTICE AT ANY TIME.  
 3. DIMENSIONS ARE IN INCHES [mm].  
 4. FITS MIL-C-17 AND EQUIVALENT CABLES.

FSCM NO. 53919

CAD FILE 092812-A

SCALE N/A

SIZE A

2233



Pasternack Enterprises, Inc.  
 P.O. Box 16759 | Irvine | CA | 92623  
 Phone: (949) 261-1920 | Fax: (949) 261-7451  
 Website: www.pasternack.com | E-Mail: sales@pasternack.com