



SMA Male to 3.5mm Male Cable Using PE-SR402FLJ Coax

RF Cable Assemblies Technical Data Sheet

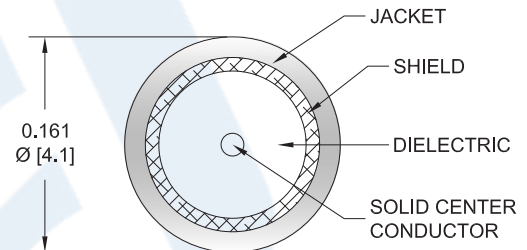
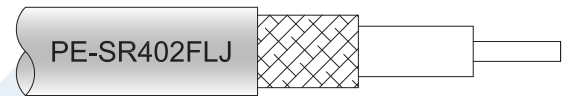
PE3W07633

Configuration

- Connector 1: SMA Male
- Connector 2: 3.5mm Male
- Cable Type: PE-SR402FLJ

Features

- Max Frequency 18 GHz
- Shielding Effectivity > 100 dB
- 70% Phase Velocity
- FEP Jacket



Applications

- General Purpose
- Laboratory Use

Description

Pasternack's PE3W07633 SMA male to 3.5mm male cable using PE-SR402FLJ coax is part of our full line of RF components available for same-day shipping. Pasternack's formable RF cable assemblies provide an alternative to costly pre-formed semi-rigid assemblies since they are hand formable. This Pasternack SMA to 3.5mm cable assembly has a male to male gender configuration with 50 ohm formable PE-SR402FLJ coax. The PE3W07633 SMA male to 3.5mm male cable assembly operates to 18 GHz.

Custom versions of most RF cable assemblies can be built and shipped same day. Custom cable assembly lengths can be obtained by specifying the desired length on the web site at time of order or by contacting a sales representative. Other available RF cable assembly value added services include connector orientation or clocking, heat shrink booting and custom labeling. RF testing can also be performed to document the electrical performance of your cable assembly.

Click the following link (or enter part number in "SEARCH" on website) to obtain additional part information including price, inventory and certifications: [SMA Male to 3.5mm Male Cable Using PE-SR402FLJ Coax PE3W07633](#)



SMA Male to 3.5mm Male Cable Using PE-SR402FLJ Coax

RF Cable Assemblies Technical Data Sheet

PE3W07633

Electrical Specifications

Description	Minimum	Typical	Maximum	Units
Frequency Range	DC		18	GHz
VSWR			1.4:1	
Velocity of Propagation		70		%
RF Shielding	100			dB
Group Delay		1.43 [4.69]		ns/ft [ns/m]
Capacitance		29 [95.14]		pF/ft [pF/m]
DC Resistance Inner Conductor		8.23 [27]		Ω/1000ft [Ω/Km]
Operating Voltage (AC)			500	Vrms

Specifications by Frequency

Description	F1	F2	F3	F4	F5	Units
Frequency	1	2	4.5	9	18	GHz
Insertion Loss (Typ.)	0.125	0.173	0.295	0.449	0.681	dB/ft
	0.41	0.57	0.97	1.47	2.23	dB/m

Electrical Specification Notes:

Insertion Loss does not include the loss of the connectors. Insertion Loss is estimated as 0.1 for SMA Male connector and 0.04 xSQRT(FGHz) db for 3.5mm Male connector.

Mechanical Specifications

Cable Assembly

Weight 0.052 lbs [23.59 g]

Cable

Cable Type PE-SR402FLJ
 Impedance 50 Ohms
 Inner Conductor Type Solid
 Inner Conductor Material and Plating Copper, Silver
 Dielectric Type PTFE
 Jacket Material FEP, Black
 Jacket Diameter 0.161 in [4.09 mm]

One Time Minimum Bend Radius 0.315 in [8 mm]
 Repeated Minimum Bend Radius 1.575 in [40.01 mm]

Click the following link (or enter part number in "SEARCH" on website) to obtain additional part information including price, inventory and certifications: [SMA Male to 3.5mm Male Cable Using PE-SR402FLJ Coax PE3W07633](#)



SMA Male to 3.5mm Male Cable Using PE-SR402FLJ Coax

RF Cable Assemblies Technical Data Sheet

PE3W07633

Connectors

Description	Connector 1	Connector 2
Type	SMA Male	3.5mm Male
Specification	MIL-STD-348A	
Impedance	50 Ohms	50 Ohms
Mating Cycles		500
Contact Material and Plating	Brass, Gold	Beryllium Copper, Gold over Nickel
Contact Plating Specification	50 μ m minimum	50 μ m minimum
Dielectric Type	PTFE	PCTFE
Body Material and Plating	Stainless Steel, Gold	Passivated Stainless Steel
Body Plating Specification	10 μ m minimum	SAE-AMS-2700
Coupling Nut Material and Plating	Brass, Nickel	Passivated Stainless Steel
Coupling Nut Plating Specification	100 μ m minimum	SAE-AMS-2700
Hex Size	5/16 inch	5/16 inch
Torque	3 in-lbs [0.34 Nm]	8 in-lbs [0.9 Nm]

Environmental Specifications

Temperature

Operating Range -65 to +150 deg C

Compliance Certifications (see [product page](#) for current document)

Plotted and Other Data

Notes:

Click the following link (or enter part number in "SEARCH" on website) to obtain additional part information including price, inventory and certifications: [SMA Male to 3.5mm Male Cable Using PE-SR402FLJ Coax PE3W07633](#)



SMA Male to 3.5mm Male Cable Using PE-SR402FLJ Coax

RF Cable Assemblies Technical Data Sheet

PE3W07633

How to Order

Part Number Configuration:

PE3W07633

- **xx**

uu

Unit of Measure:

cm = Centimeters

<blank> = Inches

Length

Base Number

Example: PE3W07633-12 = 12 inches long cable
PE3W07633-100cm = 100 cm long cable

SMA Male to 3.5mm Male Cable Using PE-SR402FLJ Coax from Pasternack Enterprises has same day shipment for domestic and International orders. Our RF, microwave and millimeter wave products maintain a 99.4% availability and are part of the broadest selection in the industry.

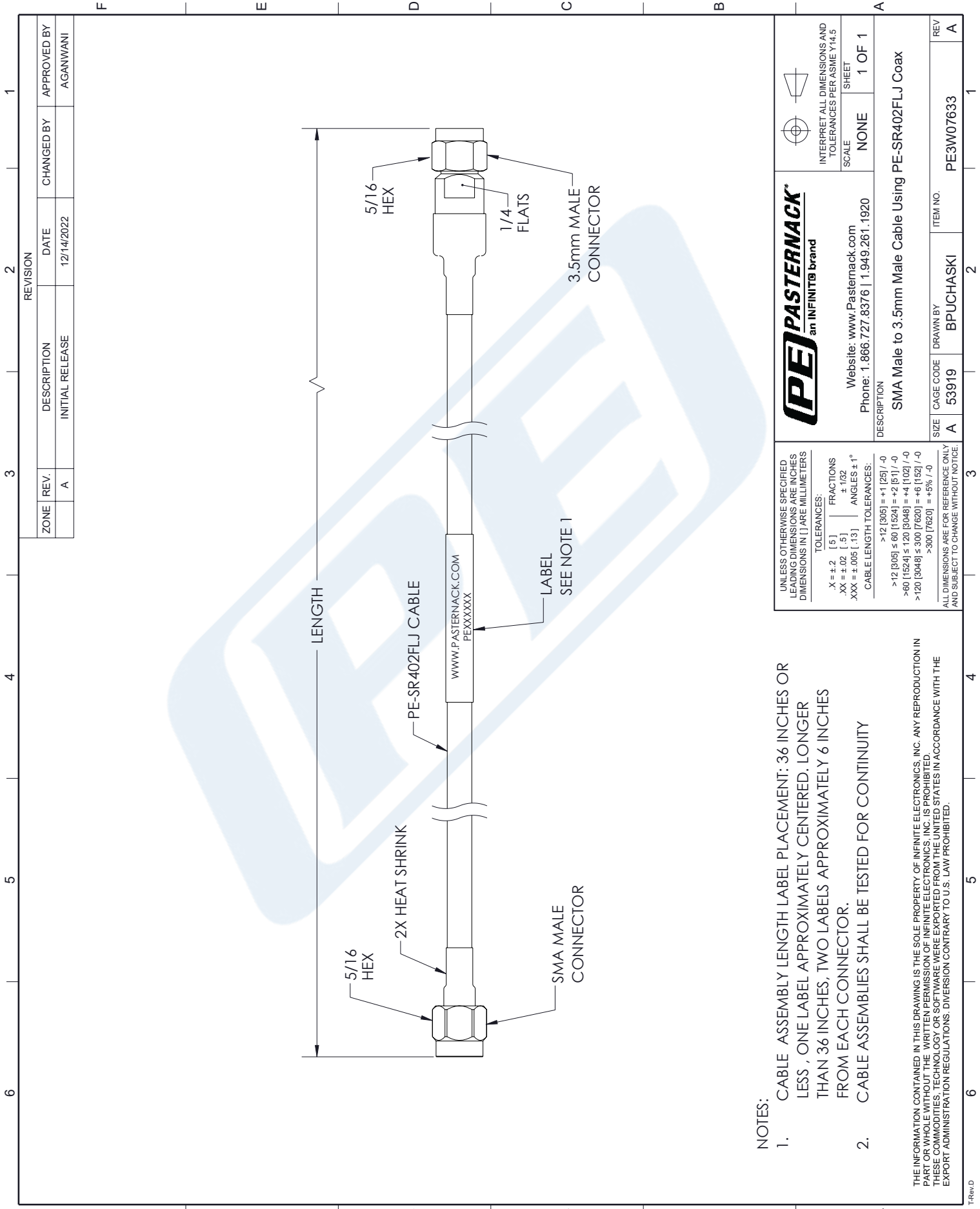
Click the following link (or enter part number in "SEARCH" on website) to obtain additional part information including price, inventory and certifications: [SMA Male to 3.5mm Male Cable Using PE-SR402FLJ Coax PE3W07633](#)

URL: <https://www.pasternack.com/sma-male-to-3.5mm-male-cable-using-pe-sr402flj-pe3w07633-p.aspx>

The information contained in this document is accurate to the best of our knowledge and representative of the part described herein. It may be necessary to make modifications to the part and/or the documentation of the part, in order to implement improvements. Pasternack reserves the right to make such changes as required. Unless otherwise stated, all specifications are nominal. Pasternack does not make any representation or warranty regarding the suitability of the part described herein for any particular purpose, and Pasternack does not assume any liability arising out of the use of any part or documentation.

PE3W07633 CAD Drawing

SMA Male to 3.5mm Male Cable Using PE-SR402FLJ Coax



NOTES:

1. CABLE ASSEMBLY LENGTH LABEL PLACEMENT: 36 INCHES OR LESS , ONE LABEL APPROXIMATELY CENTERED. LONGER THAN 36 INCHES, TWO LABELS APPROXIMATELY 6 INCHES FROM EACH CONNECTOR.
2. CABLE ASSEMBLIES SHALL BE TESTED FOR CONTINUITY

THE INFORMATION CONTAINED IN THIS DRAWING IS THE SOLE PROPERTY OF INFINITE ELECTRONICS, INC. ANY REPRODUCTION IN PART OR WHOLE WITHOUT THE WRITTEN PERMISSION OF INFINITE ELECTRONICS, INC. IS PROHIBITED. THESE COMMODITIES, TECHNOLOGY OR SOFTWARE WERE EXPORTED FROM THE UNITED STATES IN ACCORDANCE WITH THE EXPORT ADMINISTRATION REGULATIONS. DIVERSION CONTRARY TO U.S. LAW PROHIBITED.

UNLESS OTHERWISE SPECIFIED LEADING DIMENSIONS ARE INCHES DIMENSIONS IN [] ARE MILLIMETERS	
TOLERANCES:	
.X = ±.2 [.5]	FRACTIONS ± 1/32
.XX = ±.02 [.5]	ANGLES ± 1°
.XXX = ±.005 [.13]	CABLE LENGTH TOLERANCES:
	>12 [305] = +1 [25] / -0
	>12 [305] ≤ 60 [1524] = +2 [51] / -0
	>60 [1524] ≤ 120 [3048] = +4 [102] / -0
	>120 [3048] ≤ 300 [7620] = +6 [152] / -0
	>300 [7620] = +5% / -0
ALL DIMENSIONS ARE FOR REFERENCE ONLY AND SUBJECT TO CHANGE WITHOUT NOTICE.	

PE PASTERNAK an INFINITO brand		INTERPRET ALL DIMENSIONS AND TOLERANCES PER ASME Y14.5	
Website: www.Pasternack.com Phone: 1.866.727.8376 1.949.261.1920		SCALE: NONE	SHEET: 1 OF 1
DESCRIPTION: SMA Male to 3.5mm Male Cable Using PE-SR402FLJ Coax			
SIZE: A	CAGE CODE: 53919	DRAWN BY: BPUCHASKI	ITEM NO.: PE3W07633