

SMA Male Right Angle to QMA Male Right Angle Cable Using PE-SR405FLJ Coax with 180 Deg. Clock

RF Cable Assemblies Technical Data Sheet

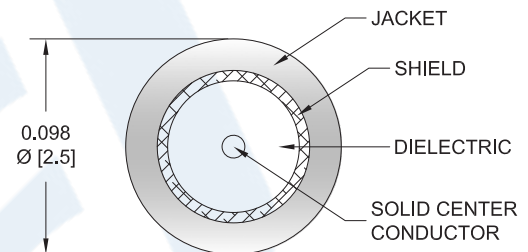
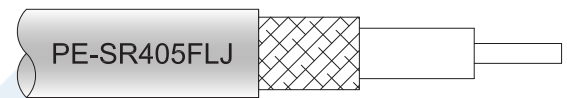
PE3W07472/SP

Configuration

- Connector 1: SMA Male Right Angle
- Connector 2: QMA Male Right Angle
- Cable Type: PE-SR405FLJ

Features

- Max Frequency 6 GHz
- Shielding Effectivity > 100 dB
- 69.5% Phase Velocity
- FEP Jacket



Applications

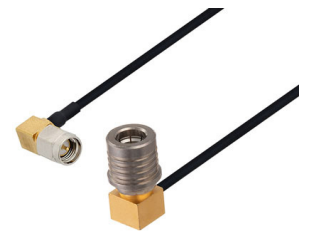
- General Purpose
- Laboratory Use

Description

Pasternack's PE3W07472/SP SMA male right angle to QMA male right angle cable using PE-SR405FLJ coax is part of our full line of RF components available for same-day shipping. Pasternack's formable RF cable assemblies provide an alternative to costly pre-formed semi-rigid assemblies since they are hand formable. This Pasternack SMA to QMA cable assembly has a male to male gender configuration with 50 ohm formable PE-SR405FLJ coax. The PE3W07472/SP SMA male to QMA male cable assembly operates to 6 GHz. The right angle SMA and right angle QMA interfaces on the PE-SR405FLJ cable allow for easier connections in tight spaces.

Custom versions of most RF cable assemblies can be built and shipped same day. Custom cable assembly lengths can be obtained by specifying the desired length on the web site at time of order or by contacting a sales representative. Other available RF cable assembly value added services include connector orientation or clocking, heat shrink booting and custom labeling. RF testing can also be performed to document the electrical performance of your cable assembly.

Click the following link (or enter part number in "SEARCH" on website) to obtain additional part information including price, inventory and certifications: [SMA Male Right Angle to QMA Male Right Angle Cable Using PE-SR405FLJ Coax with 180 Deg. Clock PE3W07472/SP](#)



SMA Male Right Angle to QMA Male Right Angle Cable
Using PE-SR405FLJ Coax with 180 Deg. Clock

RF Cable Assemblies Technical Data Sheet

PE3W07472/SP

Electrical Specifications

Description	Minimum	Typical	Maximum	Units
Frequency Range	DC		6	GHz
VSWR			1.4:1	
Velocity of Propagation		69.5		%
RF Shielding	100			dB
Group Delay		1.43 [4.69]		ns/ft [ns/m]
Capacitance		29 [95.14]		pF/ft [pF/m]
DC Resistance Inner Conductor		65.7 [215.55]		Ω /1000ft [Ω /Km]
DC Resistance Outer Conductor		10.2 [33.46]		Ω /1000ft [Ω /Km]
Operating Voltage (AC)			250	Vrms

Specifications by Frequency

Description	F1	F2	F3	F4	F5	Units
Frequency	0.25	0.5	1	2.5	6	GHz
Insertion Loss (Typ.)	0.112	0.15	0.225	0.346	0.601	dB/ft
	0.37	0.49	0.74	1.14	1.97	dB/m

Electrical Specification Notes:

Insertion Loss does not include the loss of the connectors. Insertion Loss is estimated as 0.2 dB per connector.

Mechanical Specifications

Cable Assembly

Weight 0.045 lbs [20.41 g]

Cable

Cable Type PE-SR405FLJ
 Impedance 50 Ohms
 Inner Conductor Type Solid
 Inner Conductor Material and Plating Copper Clad Steel, Silver
 Dielectric Type PTFE
 Number of Shields 1
 Outer Conductor Material and Plating Tinned Copper Composite Braid
 Jacket Material FEP, Black
 Jacket Diameter 0.105 in [2.67 mm]

One Time Minimum Bend Radius 0.5 in [12.7 mm]
 Repeated Minimum Bend Radius 0.787 in [19.99 mm]

Click the following link (or enter part number in "SEARCH" on website) to obtain additional part information including price, inventory and certifications: [SMA Male Right Angle to QMA Male Right Angle Cable Using PE-SR405FLJ Coax with 180 Deg. Clock PE3W07472/SP](#)



SMA Male Right Angle to QMA Male Right Angle Cable
Using PE-SR405FLJ Coax with 180 Deg. Clock

RF Cable Assemblies Technical Data Sheet

PE3W07472/SP

Connectors

Description	Connector 1	Connector 2
Type	SMA Male Right Angle	QMA Male Right Angle
Specification	MIL-STD-348A	
Impedance	50 Ohms	50 Ohms
Mating Cycles		100
Contact Material and Plating	Brass, Gold	Brass, Gold
Contact Plating Specification	50 µin minimum	
Dielectric Type	PTFE	PTFE
Body Material and Plating	Stainless Steel, Gold	Brass, Gold
Body Plating Specification	30 µin minimum	
Coupling Nut Material and Plating	Brass, Nickel	Brass, Nickel
Coupling Nut Plating Specification	100 µin minimum	
Hex Size	5/16 inch	
Torque	3 in-lbs [0.34 Nm]	

Environmental Specifications

Temperature

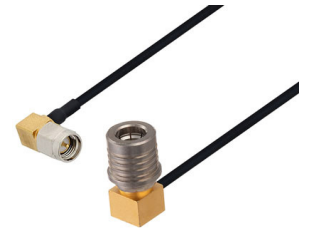
Operating Range -40 to +105 deg C

Compliance Certifications (see [product page](#) for current document)

Plotted and Other Data

Notes:

Click the following link (or enter part number in "SEARCH" on website) to obtain additional part information including price, inventory and certifications: [SMA Male Right Angle to QMA Male Right Angle Cable Using PE-SR405FLJ Coax with 180 Deg. Clock PE3W07472/SP](#)



SMA Male Right Angle to QMA Male Right Angle Cable
Using PE-SR405FLJ Coax with 180 Deg. Clock

RF Cable Assemblies Technical Data Sheet

PE3W07472/SP

How to Order

Part Number Configuration:

PE3W07472/SP - xx uu

Unit of Measure:
cm = Centimeters
<blank> = Inches
Length
Base Number

Example: PE3W07472/SP-12 = 12 inches long cable
PE3W07472/SP-100cm = 100 cm long cable

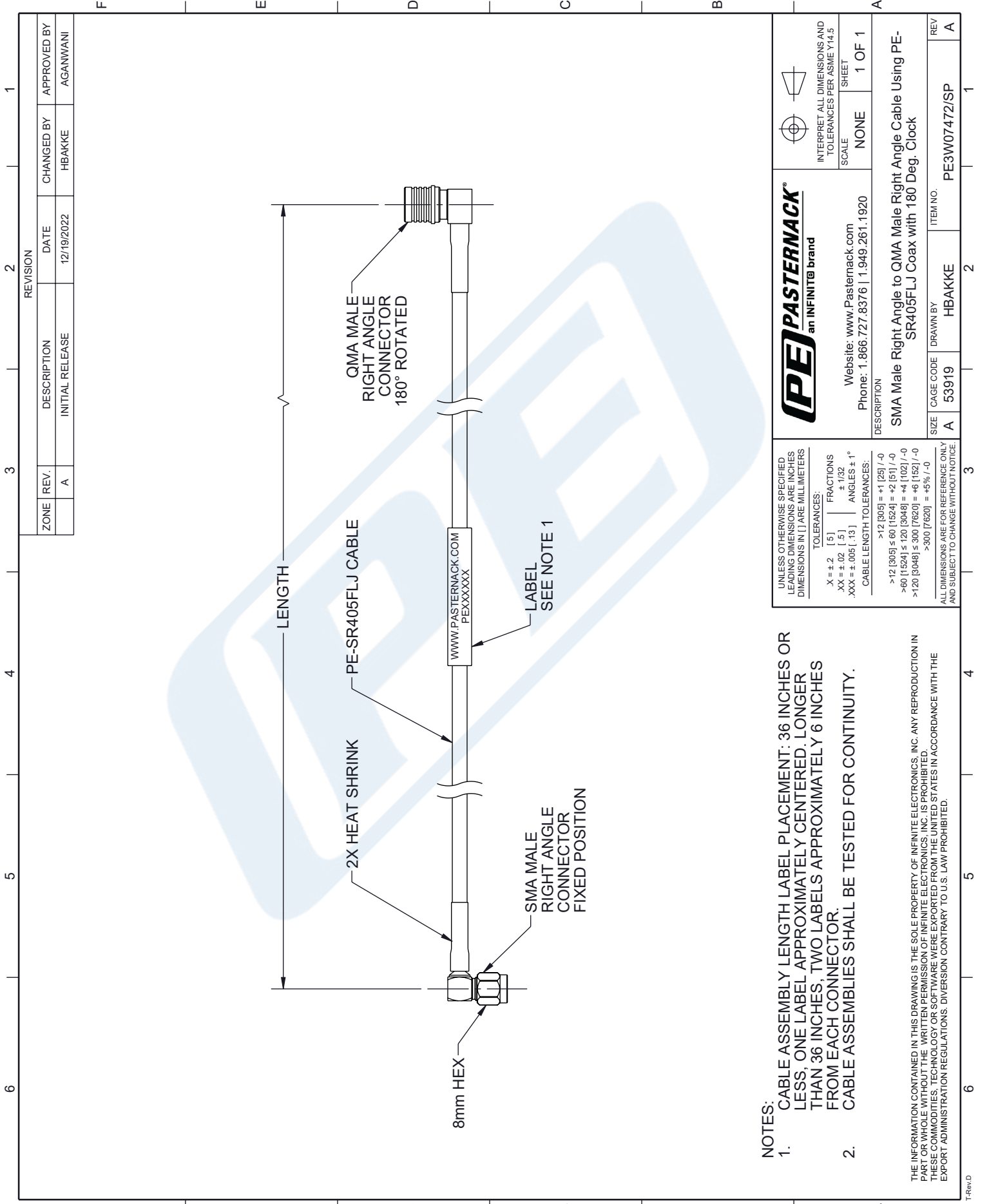
SMA Male Right Angle to QMA Male Right Angle Cable Using PE-SR405FLJ Coax with 180 Deg. Clock from Pasternack Enterprises has same day shipment for domestic and International orders. Our RF, microwave and millimeter wave products maintain a 99.4% availability and are part of the broadest selection in the industry.

Click the following link (or enter part number in "SEARCH" on website) to obtain additional part information including price, inventory and certifications: [SMA Male Right Angle to QMA Male Right Angle Cable Using PE-SR405FLJ Coax with 180 Deg. Clock PE3W07472/SP](https://www.pasternack.com/sma-male-right-angle-to-qma-male-right-angle-cable-using-pe-sr405flj-pe3w07472-sp-p.aspx)

URL: <https://www.pasternack.com/sma-male-right-angle-to-qma-male-cable-using-pe-sr405flj-pe3w07472-sp-p.aspx>

The information contained in this document is accurate to the best of our knowledge and representative of the part described herein. It may be necessary to make modifications to the part and/or the documentation of the part, in order to implement improvements. Pasternack reserves the right to make such changes as required. Unless otherwise stated, all specifications are nominal. Pasternack does not make any representation or warranty regarding the suitability of the part described herein for any particular purpose, and Pasternack does not assume any liability arising out of the use of any part or documentation.

PE3W07472/SP CAD Drawing
 SMA Male Right Angle to QMA Male Right Angle Cable
 Using PE-SR405FLJ Coax with 180 Deg. Clock



- NOTES:**
- CABLE ASSEMBLY LENGTH LABEL PLACEMENT: 36 INCHES OR LESS, ONE LABEL APPROXIMATELY CENTERED, LONGER THAN 36 INCHES, TWO LABELS APPROXIMATELY 6 INCHES FROM EACH CONNECTOR.
 - CABLE ASSEMBLIES SHALL BE TESTED FOR CONTINUITY.

THE INFORMATION CONTAINED IN THIS DRAWING IS THE SOLE PROPERTY OF INFINITE ELECTRONICS, INC. ANY REPRODUCTION IN PART OR WHOLE WITHOUT THE WRITTEN PERMISSION OF INFINITE ELECTRONICS, INC. IS PROHIBITED. THESE COMMODITIES, TECHNOLOGY OR SOFTWARE WERE EXPORTED FROM THE UNITED STATES IN ACCORDANCE WITH THE EXPORT ADMINISTRATION REGULATIONS. DIVERSION CONTRARY TO U.S. LAW PROHIBITED.

UNLESS OTHERWISE SPECIFIED LEADING DIMENSIONS ARE INCHES DIMENSIONS IN [] ARE MILLIMETERS TOLERANCES: X = ±.2 [5] FRACTIONS ± 1/32 .XX = ±.02 [.5] ANGLES ± 1° .XXX = ±.005 [.13] CABLE LENGTH TOLERANCES: >12 [305] = +1 [25] / -0 >60 [1524] ≤ 60 [1524] = -2 [51] / -0 >60 [1524] ≤ 120 [3048] = +4 [102] / -0 >120 [3048] ≤ 300 [7620] = +6 [152] / -0 >300 [7620] = +5% / -0 ALL DIMENSIONS ARE FOR REFERENCE ONLY AND SUBJECT TO CHANGE WITHOUT NOTICE	Website: www.Pastermack.com Phone: 1.866.727.8376 1.949.261.1920	INTERPRET ALL DIMENSIONS AND TOLERANCES PER ASME Y14.5 SCALE NONE SHEET 1 OF 1
		DESCRIPTION SMA Male Right Angle to QMA Male Right Angle Cable Using PE-SR405FLJ Coax with 180 Deg. Clock

ZONE	REV.	DESCRIPTION	DATE	CHANGED BY	APPROVED BY
A		INITIAL RELEASE	12/19/2022	HBAKKE	AGANWANI