



SMA Male to MCX Plug Cable Using RG316 Coax with HeatShrink, LF Solder

TECHNICAL DATA SHEET

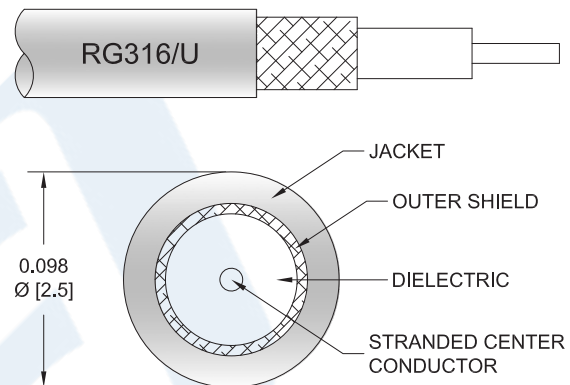
PE3W02270LF/HS

Configuration

- Connector 1: SMA Male
- Connector 2: MCX Plug
- Cable Type: RG316
- Coax Flex Type: Flexible

Features

- Max Frequency 3 GHz
- 69% Phase Velocity
- FEP Jacket



Applications

- General Purpose
- Laboratory Use

Description

Pasternack's PE3W02270LF/HS SMA male to MCX plug cable using RG316 coax is part of our full line of RF components available for same-day shipping. Pasternack's flexible RF cable assemblies are ideal for applications where tight bends and flexure are required. This Pasternack SMA to MCX cable assembly has a male to plug gender configuration with 50 ohm flexible RG316 coax. The PE3W02270LF/HS SMA male to MCX plug cable assembly operates to 3 GHz.

Custom versions of most RF cable assemblies can be built and shipped same day. Custom cable assembly lengths can be obtained by specifying the desired length on the web site at time of order or by contacting a sales representative. Other available RF cable assembly value added services include connector orientation or clocking, heat shrink booting and custom labeling. RF testing can also be performed to document the electrical performance of your cable assembly.

Click the following link (or enter part number in "SEARCH" on website) to obtain additional part information including price, inventory and certifications: [SMA Male to MCX Plug Cable Using RG316 Coax with HeatShrink, LF Solder PE3W02270LF/HS](#)



SMA Male to MCX Plug Cable Using RG316 Coax with HeatShrink, LF Solder

TECHNICAL DATA SHEET

PE3W02270LF/HS

Electrical Specifications

Description	Minimum	Typical	Maximum	Units
Frequency Range	DC		3	GHz
VSWR			1.5:1	
Velocity of Propagation		69		%
Capacitance		29.4 [96.46]		pF/ft [pF/m]
DC Resistance Inner Conductor		8.41 [27.59]		Ω /1000ft [Ω /Km]
Jacket Spark			2,000	Vrms

Specifications by Frequency

Description	F1	F2	F3	F4	F5	Units
Frequency	0.1	0.25	0.5	1	3	GHz
Insertion Loss (Max.)	0.31	0.35	0.4	0.5	0.75	dB/ft
	1.02	1.15	1.31	1.64	2.46	

Electrical Specification Notes:

Insertion Loss does not include the loss of the connectors. Insertion Loss is estimated as 0.1dB per connector.

Mechanical Specifications

Cable Assembly

Weight 0.03 lbs [13.61 g]

Cable

Cable Type RG316
 Impedance 50 Ohms
 Inner Conductor Type Stranded
 Inner Conductor Material and Plating Copper Clad Steel, Silver
 Dielectric Type PTFE
 Number of Shields 1
 Shield Layer 1 Silver Plated Copper Braid
 Jacket Material FEP, Tan
 Jacket Diameter 0.102 in [2.59 mm]

Click the following link (or enter part number in "SEARCH" on website) to obtain additional part information including price, inventory and certifications: [SMA Male to MCX Plug Cable Using RG316 Coax with HeatShrink, LF Solder PE3W02270LF/HS](#)



SMA Male to MCX Plug Cable Using
RG316 Coax with HeatShrink, LF Solder

TECHNICAL DATA SHEET

PE3W02270LF/HS

Connectors

Description	Connector 1	Connector 2
Type	SMA Male Threaded	MCX Plug Push-On
Specification		CECC 22220
Impedance	50 Ohms	50 Ohms
Contact Material and Plating	Brass, Gold	Brass, Gold
Contact Plating Specification		30μ in. minimum
Dielectric Type	PTFE	Teflon
Body Material and Plating	Brass, Gold	Brass, Nickel
Body Plating Specification		100μ in. minimum
Coupling Nut Material and Plating	Brass, Gold	
Hex Size	16-May in	
Torque	5 in-lbs [0.57 Nm]	

Compliance Certifications (see [product page](#) for current document)

Plotted and Other Data

Notes:

Click the following link (or enter part number in "SEARCH" on website) to obtain additional part information including price, inventory and certifications: [SMA Male to MCX Plug Cable Using RG316 Coax with HeatShrink, LF Solder PE3W02270LF/HS](#)



SMA Male to MCX Plug Cable Using RG316 Coax with HeatShrink, LF Solder

TECHNICAL DATA SHEET

PE3W02270LF/HS

How to Order

Part Number Configuration:

PE3W02270LF/HS - xx

uu

Unit of Measure:
cm = Centimeters
<blank> = Inches
Length
Base Number

Example: PE3W02270LF/HS-12 = 12 inches long cable
PE3W02270LF/HS-100cm = 100 cm long cable

SMA Male to MCX Plug Cable Using RG316 Coax with HeatShrink, LF Solder from Pasternack Enterprises has same day shipment for domestic and International orders. Our RF, microwave and millimeter wave products maintain a 99.4% availability and are part of the broadest selection in the industry.

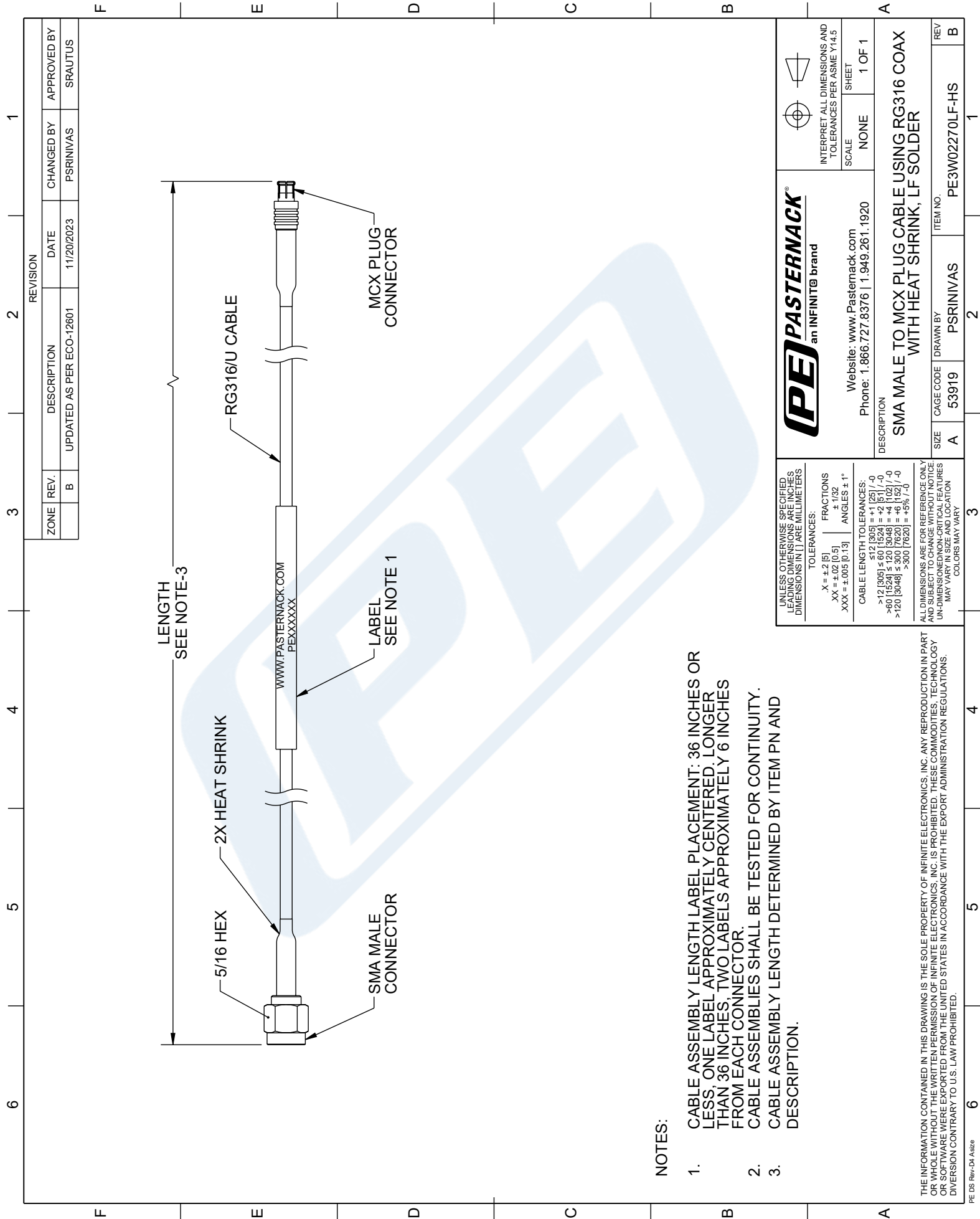
Click the following link (or enter part number in "SEARCH" on website) to obtain additional part information including price, inventory and certifications: [SMA Male to MCX Plug Cable Using RG316 Coax with HeatShrink, LF Solder PE3W02270LF/HS](#)

URL: <https://www.pasternack.com/sma-male-mcx-plug-rg316u-cable-assembly-pe3w02270lf-hs-p.aspx>

The information contained in this document is accurate to the best of our knowledge and representative of the part described herein. It may be necessary to make modifications to the part and/or the documentation of the part, in order to implement improvements. Pasternack reserves the right to make such changes as required. Unless otherwise stated, all specifications are nominal. Pasternack does not make any representation or warranty regarding the suitability of the part described herein for any particular purpose, and Pasternack does not assume any liability arising out of the use of any part or documentation.

PE3W02270LF/HS CAD Drawing

SMA Male to MCX Plug Cable Using RG316 Coax with HeatShrink, LF Solder



ZONE	REV.	DESCRIPTION	DATE	CHANGED BY	APPROVED BY
B		UPDATED AS PER ECO-12601	11/20/2023	PSRINIVAS	SRAUTUS

(PE) PASTERNAK
an INFINIT@ brand

Website: www.Pasternack.com
Phone: 1.866.727.8376 | 1.949.261.1920

UNLESS OTHERWISE SPECIFIED
LENGTH DIMENSIONS ARE IN INCHES
DIMENSIONS IN PARENTHESIS ARE IN MILLIMETERS

TOLERANCES:
 .X = ±.2 [5]
 .XX = ±.02 [0.5]
 .XXX = ±.005 [0.13]

FRACTIONS
 ± 1/32

ANGLES ± 1°

CABLE LENGTH TOLERANCES:
 ≤ 12 [305] = ±.125 [-0]
 ≤ 120 [3048] = ±.125 [-0]
 ≤ 300 [7620] = ±.125 [-0]
 ≤ 60 [1524] = ±.125 [-0]
 ≤ 300 [7620] = ±.125 [-0]
 > 300 [7620] = ±.125 [-0]

ALL DIMENSIONS ARE FOR REFERENCE ONLY
UNLESS OTHERWISE SPECIFIED
UNLESS OTHERWISE SPECIFIED
DIMENSIONS ON CRITICAL FEATURES
MAY VARY IN SIZE AND LOCATION
COLORS MAY VARY

INTERPRET ALL DIMENSIONS AND TOLERANCES PER ASME Y14.5

SCALE NONE SHEET 1 OF 1

DESCRIPTION
SMA MALE TO MCX PLUG CABLE USING RG316 COAX WITH HEAT SHRINK, LF SOLDER

CAGE CODE 53919 DRAWN BY PSRINIVAS ITEM NO. PE3W02270LF-HS REV B

NOTES:

1. CABLE ASSEMBLY LENGTH LABEL PLACEMENT: 36 INCHES OR LESS, ONE LABEL APPROXIMATELY CENTERED, LONGER THAN 36 INCHES, TWO LABELS APPROXIMATELY 6 INCHES FROM EACH CONNECTOR.
2. CABLE ASSEMBLIES SHALL BE TESTED FOR CONTINUITY.
3. CABLE ASSEMBLY LENGTH DETERMINED BY ITEM PN AND DESCRIPTION.

THE INFORMATION CONTAINED IN THIS DRAWING IS THE SOLE PROPERTY OF INFINITE ELECTRONICS, INC. ANY REPRODUCTION IN PART OR WHOLE WITHOUT THE WRITTEN PERMISSION OF INFINITE ELECTRONICS, INC. IS PROHIBITED. THESE COMMODITIES, TECHNOLOGY OR SOFTWARE WERE EXPORTED FROM THE UNITED STATES IN ACCORDANCE WITH THE EXPORT ADMINISTRATION REGULATIONS. DIVERSION CONTRARY TO U.S. LAW PROHIBITED.