



## BNC Female Bulkhead to SMA Male Cable Using RG58 Coax

### RF Cable Assemblies Technical Data Sheet

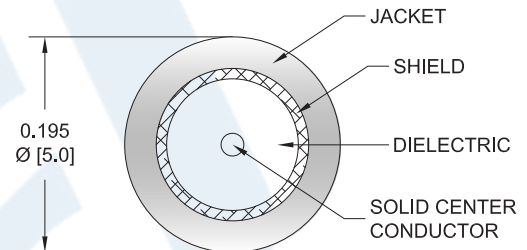
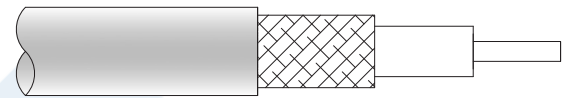
PE3W01634

#### Configuration

- Connector 1: BNC Female Bulkhead Isolated Ground
- Connector 2: SMA Male
- Cable Type: RG58

#### Features

- Max Frequency 1 GHz
- 65.9% Phase Velocity
- PVC (NC) Jacket



#### Applications

- General Purpose
- Laboratory Use

#### Description

Pasternack's PE3W01634 BNC female bulkhead to SMA male cable using RG58 coax is part of our full line of RF components available for same-day shipping. Pasternack's flexible RF cable assemblies are ideal for applications where tight bends and flexure are required. This Pasternack BNC to SMA cable assembly has a female to male gender configuration with 50 ohm flexible RG58 coax. The PE3W01634 BNC female to SMA male cable assembly operates to 1 GHz. Our RF cable assembly with BNC bulkhead interface allows designers to create external connections on their product enclosures, and can be used in a variety of other rack mount and panel mount applications.

Custom versions of most RF cable assemblies can be built and shipped same day. Custom cable assembly lengths can be obtained by specifying the desired length on the web site at time of order or by contacting a sales representative. Other available RF cable assembly value added services include connector orientation or clocking, heat shrink booting and custom labeling. RF testing can also be performed to document the electrical performance of your cable assembly.

#### Electrical Specifications

Description	Minimum	Typical	Maximum	Units
Frequency Range	DC		1,000	MHz
VSWR			1.5:1	
Velocity of Propagation		65.9		%
Capacitance		30.8 [101.05]		pF/ft [pF/m]

Click the following link (or enter part number in "SEARCH" on website) to obtain additional part information including price, inventory and certifications: [BNC Female Bulkhead to SMA Male Cable Using RG58 Coax PE3W01634](#)



## BNC Female Bulkhead to SMA Male Cable Using RG58 Coax

### RF Cable Assemblies Technical Data Sheet

PE3W01634

#### Specifications by Frequency

Description	F1	F2	F3	F4	F5	Units
Frequency	50	100	250	500	1,000	MHz
Insertion Loss (Max.)	0.02	0.05	0.06	0.11	0.2	dB/ft
	0.07	0.16	0.2	0.36	0.66	dB/m

#### Electrical Specification Notes:

Insertion Loss does not include the loss of connectors. Insertion Loss is estimated as 0.2dB of connector loss

#### Mechanical Specifications

##### Cable Assembly

Diameter 0.611 in [15.52 mm]

##### Cable

Cable Type RG58  
 Impedance 50 Ohms  
 Inner Conductor Type Stranded  
 Inner Conductor Material and Plating Copper, Tin  
 Dielectric Type PE  
 Number of Shields 1  
 Shield Layer 1 Tinned Copper Braid  
 Jacket Material PVC (NC), Black  
 Jacket Diameter 0.195 in [4.95 mm]

One Time Minimum Bend Radius 0.98 in [24.89 mm]  
 Repeated Minimum Bend Radius 1.96 in [49.78 mm]

Click the following link (or enter part number in "SEARCH" on website) to obtain additional part information including price, inventory and certifications: [BNC Female Bulkhead to SMA Male Cable Using RG58 Coax PE3W01634](#)



## BNC Female Bulkhead to SMA Male Cable Using RG58 Coax

### RF Cable Assemblies Technical Data Sheet

PE3W01634

#### Connectors

Description	Connector 1	Connector 2
Type	BNC Female Bulkhead Isolated Ground	SMA Male
Specification		MIL-STD-348A
Impedance	50 Ohms	50 Ohms
Color		
Isolated Ground/Hermetic Seal	Isolated Ground	
Contact Material and Plating	Phosphor Bronze, Gold	Brass, Gold
Contact Plating Specification		50 $\mu$ in minimum
Dielectric Type	Teflon	PTFE
Outer Conductor Material and Plating	Brass, Nickel	
Body Material and Plating	Brass, Nickel	Brass, Nickel
Body Plating Specification		100 $\mu$ in minimum
Coupling Nut Material and Plating		Brass, Nickel
Coupling Nut Plating Specification		100 $\mu$ in minimum
Hex Size		5/16 inch
Torque		3 in-lbs [0.34 Nm]

#### Mechanical Specification Notes:

\*All cable assemblies have a length tolerance of 1.5% or  $\pm 3/8$ ", whichever is greater.

**Compliance Certifications** (see [product page](#) for current document)

#### Plotted and Other Data

Notes:

Click the following link (or enter part number in "SEARCH" on website) to obtain additional part information including price, inventory and certifications: [BNC Female Bulkhead to SMA Male Cable Using RG58 Coax PE3W01634](#)



## BNC Female Bulkhead to SMA Male Cable Using RG58 Coax

### RF Cable Assemblies Technical Data Sheet

PE3W01634

#### How to Order

Part Number Configuration:

**PE3W01634**

- **xx**

**uu**

Unit of Measure:  
cm = Centimeters  
<blank> = Inches  
Length  
Base Number

Example: PE3W01634-12 = 12 inches long cable  
PE3W01634-100cm = 100 cm long cable

BNC Female Bulkhead to SMA Male Cable Using RG58 Coax from Pasternack Enterprises has same day shipment for domestic and International orders. Our RF, microwave and millimeter wave products maintain a 99.4% availability and are part of the broadest selection in the industry.

Click the following link (or enter part number in "SEARCH" on website) to obtain additional part information including price, inventory and certifications: [BNC Female Bulkhead to SMA Male Cable Using RG58 Coax PE3W01634](https://www.pasternack.com/bnc-female-sma-male-rg58cu-cable-assembly-pe3w01634-p.aspx)

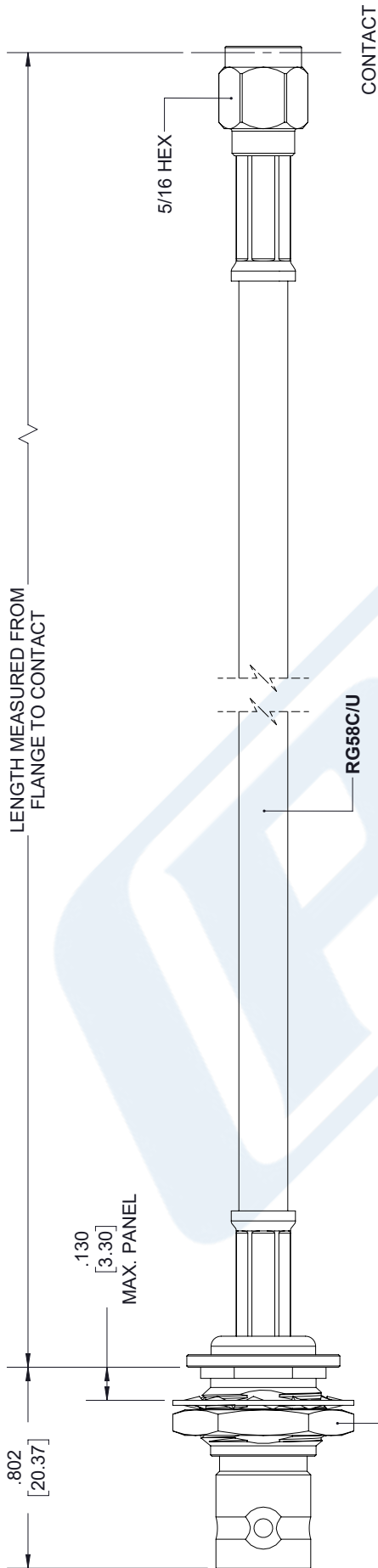
URL: <https://www.pasternack.com/bnc-female-sma-male-rg58cu-cable-assembly-pe3w01634-p.aspx>

The information contained in this document is accurate to the best of our knowledge and representative of the part described herein. It may be necessary to make modifications to the part and/or the documentation of the part, in order to implement improvements. Pasternack reserves the right to make such changes as required. Unless otherwise stated, all specifications are nominal. Pasternack does not make any representation or warranty regarding the suitability of the part described herein for any particular purpose, and Pasternack does not assume any liability arising out of the use of any part or documentation.

# PE3W01634 CAD Drawing

## BNC Female Bulkhead to SMA Male Cable Using RG58 Coax

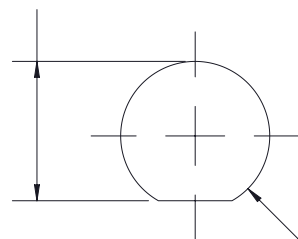
REVISIONS			
REV.	DESCRIPTION	DATE	APPROVED
A	INITIAL RELEASE	05/10/19	S.ELLIS



**BNC FEMALE  
BULKHEAD**

**SMA MALE**

$.472^{+.005}$   
 $-.000$   
[ 11.99<sup>+0.13</sup>  
0.00 ]



$\text{Ø } .505^{+.005}$   
 $-.000$   
[ 12.83<sup>+0.13</sup>  
0.00 ]

**MOUNTING HOLE**

UNLESS OTHERWISE SPECIFIED  
LEADING DIMENSIONS ARE INCHES  
DIMENSIONS IN [ ] ARE MILLIMETERS

TOLERANCES:  
X±.2 [5.08] FRACTIONS  
XX±.01 [ .25 ] ±.132  
.XXX±.005 [ .13 ] ANGLES ± 1°

ALL DIMENSIONS SHOWN  
ARE FOR REFERENCE ONLY.

THIRD-ANGLE PROJECTION



Pasternack Enterprises, Inc.  
P.O. Box 16759, Irvine, CA 92623.  
Phone: 1,949,261,1920 | 1,866,727,8376  
Fax: 1,949,261,7451  
www.pasternack.com | e-mail: sales@pasternack.com

THE INFORMATION AND  
DESIGN IN THIS DOCUMENT  
IS THE PROPERTY OF  
PASTERNAK CORPORATION.  
ALL RIGHTS RESERVED.

SHEET 1 OF 1  
SCALE N/A

SIZE	CAGE	DRAWN BY	PART NUMBER	REV
A	53919	K.DANG	PE3W01634	A

THESE COMMODITIES, TECHNOLOGY OR SOFTWARE WERE EXPORTED FROM THE UNITED STATES IN ACCORDANCE WITH THE EXPORT ADMINISTRATION REGULATIONS. DIVERSION CONTRARY TO U.S. LAW PROHIBITED.