



SHV Plug to Straight Cut Lead Cable Using 93 Ohm RG62 Coax

RF Cable Assemblies Technical Data Sheet

PE3C6972

Configuration

- Connector 1: SHV Plug
- Connector 2: Straight Cut Lead
- Cable Type: RG62

Features

- Shielding Effectivity > 45 dB
- 83% Phase Velocity
- PVC Jacket

Applications

- General Purpose
- Laboratory Use

Description

Pasternack's PE3C6972 50 ohm SHV plug to straight cut lead cable using 93 ohm RG62 coax is part of our full line of RF components available for same-day shipping. Pasternack's flexible RF cable assemblies are ideal for applications where tight bends and flexure are required.

Custom versions of most RF cable assemblies can be built and shipped same day. Custom cable assembly lengths can be obtained by specifying the desired length on the web site at time of order or by contacting a sales representative. Other available RF cable assembly value added services include connector orientation or clocking, heat shrink booting and custom labeling. RF testing can also be performed to document the electrical performance of your cable assembly.

Electrical Specifications

Description	Minimum	Typical	Maximum	Units
Velocity of Propagation		83		%
RF Shielding	45			dB
Capacitance		14.5 [47.57]		pF/ft [pF/m]

Mechanical Specifications

Cable Assembly

Weight 0.067 lbs [30.39 g]

Cable

Cable Type RG62
 Impedance 93 Ohms
 Inner Conductor Type Solid
 Inner Conductor Material and Plating Copper Clad Steel
 Dielectric Type PE (AS)

Click the following link (or enter part number in "SEARCH" on website) to obtain additional part information including price, inventory and certifications: [SHV Plug to Straight Cut Lead Cable Using 93 Ohm RG62 Coax PE3C6972](#)



SHV Plug to Straight Cut Lead Cable Using 93 Ohm RG62 Coax

RF Cable Assemblies Technical Data Sheet

PE3C6972

Number of Shields	1
Shield Layer 1	Copper Braid
Jacket Material	PVC, Black
Jacket Diameter	0.239 in [6.07 mm]
Repeated Minimum Bend Radius	2.5 in [63.5 mm]

Connectors

Description	Connector 1	Connector 2
Type	SHV Plug	Straight Cut Lead
Specification	MIL-STD-348A	
Impedance	50 Ohms	0 Ohms
Contact Material and Plating	Brass, Gold	
Contact Plating Specification	30 µin minimum	
Dielectric Type	PTFE	
Body Material and Plating	Brass, Nickel	
Body Plating Specification	100 µin minimum	
Coupling Nut Material and Plating	Brass, Nickel	
Coupling Nut Plating Specification	100 µin minimum	

Compliance Certifications (see [product page](#) for current document)

Plotted and Other Data

Notes:

Click the following link (or enter part number in "SEARCH" on website) to obtain additional part information including price, inventory and certifications: [SHV Plug to Straight Cut Lead Cable Using 93 Ohm RG62 Coax PE3C6972](#)



SHV Plug to Straight Cut Lead Cable Using 93 Ohm RG62 Coax

RF Cable Assemblies Technical Data Sheet

PE3C6972

How to Order

Part Number Configuration:

PE3C6972

- **xx**

uu

Unit of Measure:

cm = Centimeters

<blank> = Inches

Length

Base Number

Example: PE3C6972-12 = 12 inches long cable
PE3C6972-100cm = 100 cm long cable

SHV Plug to Straight Cut Lead Cable Using 93 Ohm RG62 Coax from Pasternack Enterprises has same day shipment for domestic and International orders. Our RF, microwave and millimeter wave products maintain a 99.4% availability and are part of the broadest selection in the industry.

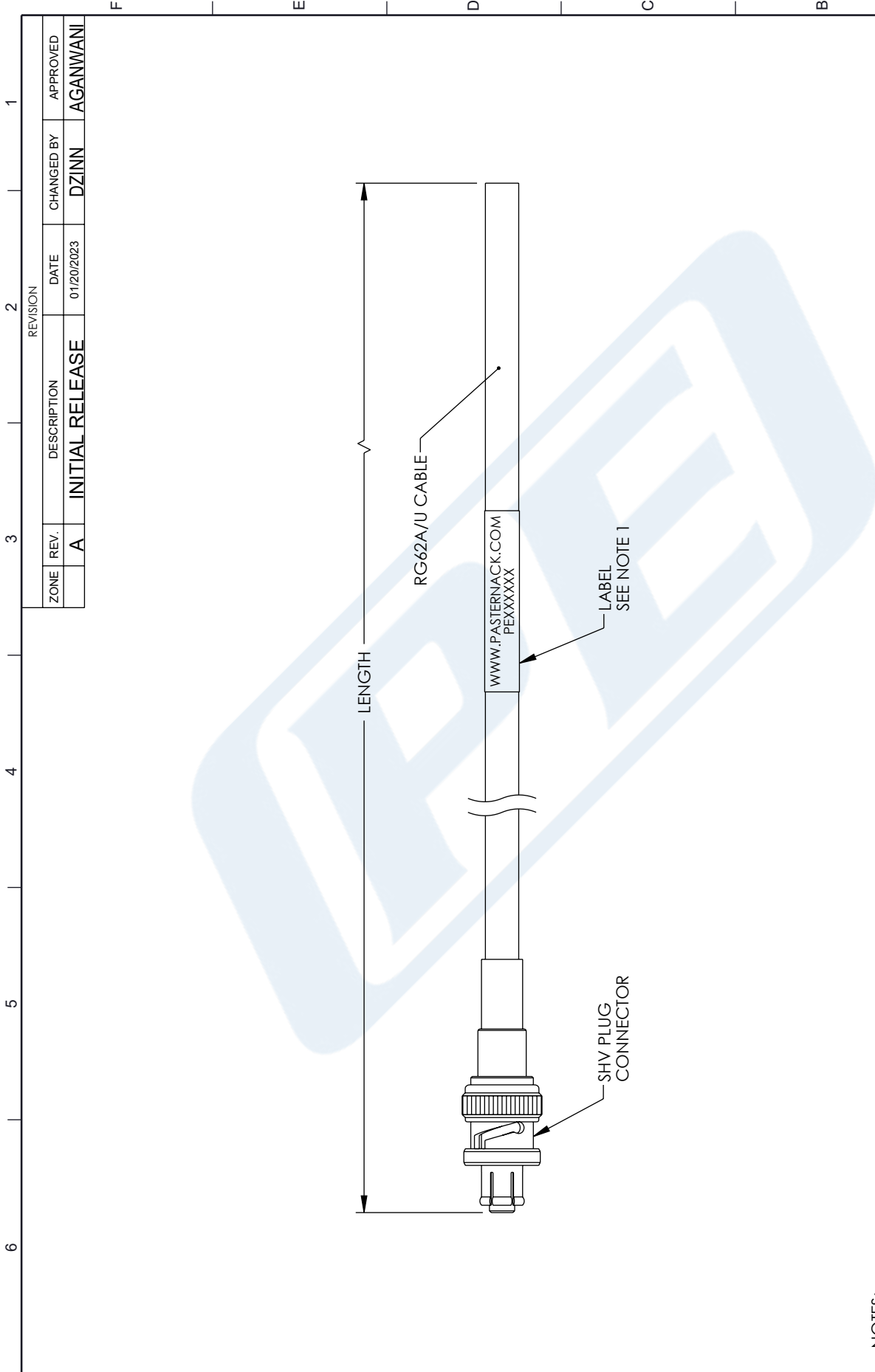
Click the following link (or enter part number in "SEARCH" on website) to obtain additional part information including price, inventory and certifications: [SHV Plug to Straight Cut Lead Cable Using 93 Ohm RG62 Coax PE3C6972](#)

URL: <https://www.pasternack.com/shv-plug-to-straight-cut-lead-cable-using-rg62-pe3c6972-p.aspx>

The information contained in this document is accurate to the best of our knowledge and representative of the part described herein. It may be necessary to make modifications to the part and/or the documentation of the part, in order to implement improvements. Pasternack reserves the right to make such changes as required. Unless otherwise stated, all specifications are nominal. Pasternack does not make any representation or warranty regarding the suitability of the part described herein for any particular purpose, and Pasternack does not assume any liability arising out of the use of any part or documentation.

PE3C6972 CAD Drawing

SHV Plug to Straight Cut Lead Cable Using 93 Ohm RG62 Coax



NOTES:

1. CABLE ASSEMBLY LENGTH LABEL PLACEMENT:
36 INCHES OR LESS, ONE LABEL APPROXIMATELY CENTERED.
LONGER THAN 36 INCHES, TWO LABELS APPROXIMATELY 6 INCHES FROM EACH CONNECTOR.
2. CABLE ASSEMBLIES SHALL BE TESTED FOR CONTINUITY.

THE INFORMATION CONTAINED IN THIS DRAWING IS THE SOLE PROPERTY OF INFINITE ELECTRONICS, INC. ANY REPRODUCTION IN PART OR WHOLE WITHOUT THE WRITTEN PERMISSION OF INFINITE ELECTRONICS, INC. IS PROHIBITED.
THESE COMMODITIES, TECHNOLOGY OR SOFTWARE WERE EXPORTED FROM THE UNITED STATES IN ACCORDANCE WITH THE EXPORT ADMINISTRATION REGULATIONS. DIVERSION CONTRARY TO U.S. LAW PROHIBITED.

<p>UNLESS OTHERWISE SPECIFIED LEADING DIMENSIONS ARE INCHES DIMENSIONS IN [] ARE MILLIMETERS</p> <p>TOLERANCES: X = ±.2 [5] FRACTIONS ± 1/32 XX = ±.02 [5] ANGLES ± 1° .XXX = ±.005 [.13]</p> <p>CABLE LENGTH TOLERANCES: >12 [305] = +1 [25] / -0 >60 [1524] ≤ 60 [1524] = -2 [51] / -0 >60 [1524] ≤ 120 [3048] = +4 [102] / -0 >120 [3048] ≤ 300 [7620] = +6 [152] / -0 >300 [7620] = +5% / -0</p> <p>ALL DIMENSIONS ARE FOR REFERENCE ONLY AND SUBJECT TO CHANGE WITHOUT NOTICE</p>	 an INFINITE brand Website: www.Pastermack.com Phone: 1.866.727.8376 1.949.261.1920	<p>INTERPRET ALL DIMENSIONS AND TOLERANCES PER ASME Y14.5</p> <p>SCALE: NONE</p> <p>SHEET: 1 OF 1</p>
DESCRIPTION: SHV PLUG TO STRAIGHT CUT LEAD CABLE USING 93 OHM RG62 COAX		
SIZE: A	DRAWN BY: DZINN	ITEM NO.: PE3C6972