

SMP Female to BNC Male Cable Using RG196 Coax



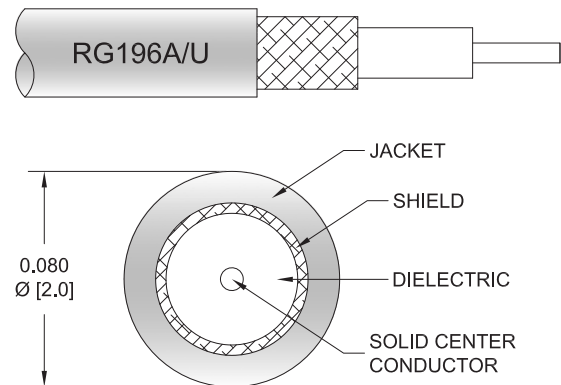
PE3C2940

Configuration

- Connector 1: SMP Female
- Connector 2: BNC Male
- Cable Type: RG196
- Coax Flex Type: Flexible

Features

- Max Frequency 1 GHz
- PTFE Jacket



Applications

- General Purpose
- Laboratory Use

Description

Pasternack's PE3C2940 SMP female to BNC male cable using RG196 coax is part of our full line of RF components available for same-day shipping. Pasternack's flexible RF cable assemblies are ideal for applications where tight bends and flexure are required. This Pasternack SMP to BNC cable assembly has a female to male gender configuration with 50 ohm flexible RG196 coax. The PE3C2940 SMP female to BNC male cable assembly operates to 1 GHz.

Custom versions of most RF cable assemblies can be built and shipped same day. Custom cable assembly lengths can be obtained by specifying the desired length on the web site at time of order or by contacting a sales representative. Other available RF cable assembly value added services include connector orientation or clocking, heat shrink booting and custom labeling. RF testing can also be performed to document the electrical performance of your cable assembly.

Electrical Specifications

Description	Minimum	Typical	Maximum	Units
Frequency Range	DC		1,000	MHz
VSWR			1.4:1	
Capacitance		32 [104.99]		pF/ft [pF/m]
Dielectric Withstanding Voltage (AC)			500	V _{rms}

Specifications by Frequency

SMP Female to BNC Male Cable Using RG196 Coax



PE3C2940

Part Number	Length	Description	F1	F2	F3	F4	F5	Units	Weight (lbs)
			Frequency	50	100	250	500	1000	
PE3C2940	Custom Lengths Available	Insertion Loss (Typ.)	0.041	0.083	0.206	0.413	0.825	dB/ft	
			0.14	0.28	0.68	1.36	2.71	dB/m	
PE3C2940-12	12 inch	Insertion Loss (Typ.)	0.25	0.29	0.41	0.62	1.03	dB	0.045
PE3C2940-24	24 inch	Insertion Loss (Typ.)	0.29	0.37	0.62	1.03	1.85	dB	0.051
PE3C2940-36	36 inch	Insertion Loss (Typ.)	0.33	0.45	0.82	1.44	2.68	dB	0.056
PE3C2940-48	48 inch	Insertion Loss (Typ.)	0.37	0.54	1.03	1.86	3.5	dB	0.061
PE3C2940-72	72 inch	Insertion Loss (Typ.)	0.45	0.7	1.44	2.68	5.15	dB	0.071

The insertion loss data for the base model does not include loss due to the connectors. Each length includes insertion loss due to the connectors.

Loss due to Connector 1:	0.1 dB
Loss due to Connector 2:	0.1 dB
Base Weight:	0.045 pounds
Additional Weight per Inch:	0.00042 pounds

Mechanical Specifications

Cable Assembly

Weight 0.045 lbs [20.41 g]

Cable

Cable Type	RG196
Impedance	50 Ohms
Inner Conductor Type	Stranded
Inner Conductor Material and Plating	Copper Clad Steel, Silver
Dielectric Type	PTFE
Number of Shields	1
Shield Layer 1	Silver Plated Copper
Jacket Material	PTFE, White
Jacket Diameter	0.08 in [2.03 mm]

SMP Female to BNC Male Cable Using RG196 Coax



PE3C2940

Connectors

Description	Connector 1	Connector 2
Type	SMP Female	BNC Male
Specification		MIL-STD-348A
Impedance	50 Ohms	50 Ohms
Configuration	Straight	Straight
Contact Material and Plating	Beryllium Copper, Gold	Brass, Gold
Contact Plating Specification	MIL-G-45204	30 µin minimum
Dielectric Type	PTFE	PTFE
Body Material and Plating	Beryllium Copper, Gold	Brass, Nickel
Body Plating Specification	MIL-G-45204	100 µin minimum
Coupling Nut Material and Plating		Brass, Nickel
Coupling Nut Plating Specification		100 µin minimum

Environmental Specifications

Operating Range Temperature -55 to +125 deg C

Compliance Certifications (see [product page](#) for current document)

Plotted and Other Data

Notes:

SMP Female to BNC Male Cable Using RG196 Coax



PE3C2940

Typical Performance Data

How to Order

Part Number Configuration:

PE3C2940

- **xx**

uu

Unit of Measure:

cm = Centimeters

<blank> = Inches

Length

Base Number

Example: PE3C2940-12 = 12 inches long cable
PE3C2940-100cm = 100 cm long cable

SMP Female to BNC Male Cable Using RG196 Coax from Pasternack Enterprises has same day shipment for domestic and International orders. Our RF, microwave and millimeter wave products maintain a 99.4% availability and are part of the broadest selection in the industry.

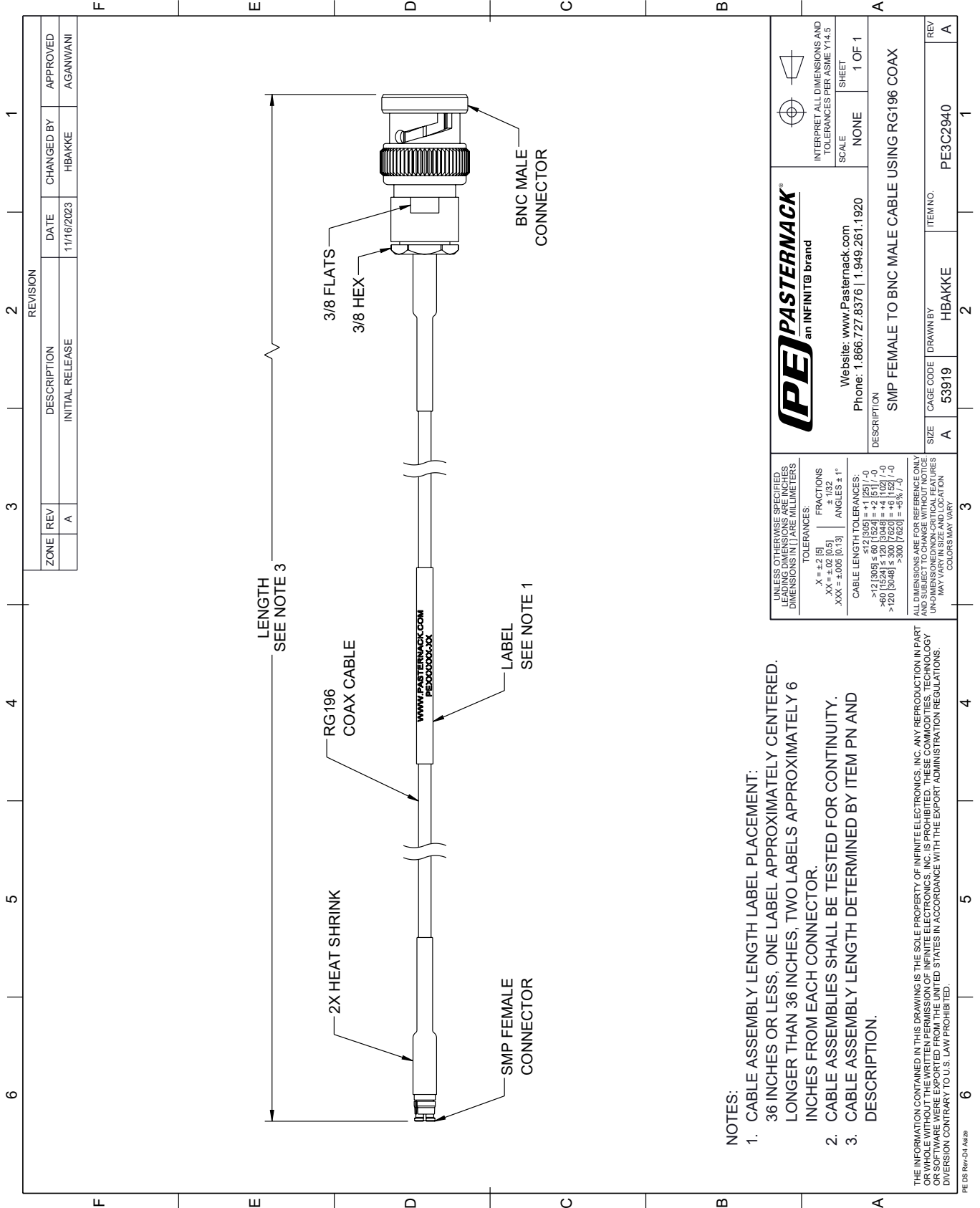
Click the following link (or enter part number in "SEARCH" on website) to obtain additional part information including price, inventory and certifications: [SMP Female to BNC Male Cable Using RG196 Coax PE3C2940](#)

URL: <https://www.pasternack.com/smp-female-to-bnc-male-cable-using-rg196-pe3c2940-p.aspx>

The information contained within this document is accurate to the best of our knowledge and representative of the part described herein. It may be necessary to make modifications to the part and/or the documentation of the part in order to implement improvements. Pasternack Enterprises reserves the right to make such changes as required. Unless otherwise stated, all specifications are nominal. Pasternack Enterprises does not make any representation or warranty regarding the suitability of the part described herein for any particular purpose, and Pasternack Enterprises does not assume liability arising out of the use of any part or document.

PE3C2940 CAD Drawing

SMP Female to BNC Male Cable Using RG196 Coax



- NOTES:
1. CABLE ASSEMBLY LENGTH LABEL PLACEMENT: 36 INCHES OR LESS, ONE LABEL APPROXIMATELY CENTERED, LONGER THAN 36 INCHES, TWO LABELS APPROXIMATELY 6 INCHES FROM EACH CONNECTOR.
 2. CABLE ASSEMBLIES SHALL BE TESTED FOR CONTINUITY.
 3. CABLE ASSEMBLY LENGTH DETERMINED BY ITEM PN AND DESCRIPTION.

THE INFORMATION CONTAINED IN THIS DRAWING IS THE SOLE PROPERTY OF INFINITE ELECTRONICS, INC. ANY REPRODUCTION IN PART OR WHOLE WITHOUT THE WRITTEN PERMISSION OF INFINITE ELECTRONICS, INC. IS PROHIBITED. THESE COMMODITIES, TECHNOLOGY OR SOFTWARE WERE EXPORTED FROM THE UNITED STATES IN ACCORDANCE WITH THE EXPORT ADMINISTRATION REGULATIONS. DIVISION CONTRARY TO U.S. LAW PROHIBITED.

PASTERNAK an INFINITE brand		Website: www.Pasternack.com Phone: 1.866.727.8376 1.949.261.1920	INTERPRET ALL DIMENSIONS AND TOLERANCES PER ASME Y14.5 SCALE: NONE SHEET: 1 OF 1
DESCRIPTION: SMP FEMALE TO BNC MALE CABLE USING RG196 COAX			
UNLESS OTHERWISE SPECIFIED, LEADING DIMENSIONS ARE IN INCHES, DIMENSIONS IN [] ARE MILLIMETERS.	TOLERANCES: .X = ±.2 [5] .XX = ±.02 [0.5] .XXX = ±.005 [0.13]	FRACTIONS: ± 1/32 ANGLES ± 1°	CABLE LENGTH TOLERANCES: <12 [305] ≤ 60 [1524] = ±1 [25] / -0 >60 [1524] ≤ 120 [3048] = ±4 [102] / -0 >120 [3048] ≤ 300 [7620] = ±5% / -0
ALL DIMENSIONS ARE FOR REFERENCE ONLY. UNDIMENSIONED/NON-CRITICAL FEATURES MAY VARY IN SIZE AND LOCATION. COLORS MAY VARY.			
SIZE: A	CAGE CODE: 53919	DRAWN BY: HBAKKE	ITEM NO.: PE3C2940

REVISION		DATE	CHANGED BY	APPROVED
ZONE	REV			
	A	11/16/2023	HBAKKE	AGANWANI
DESCRIPTION				
INITIAL RELEASE				