



## MCX Plug Right Angle to BNC Female Bulkhead Cable Using RG188 Coax with HeatShrink

### RF Cable Assemblies Technical Data Sheet

**PE33575/HS**

#### Configuration

- Connector 1: MCX Plug Right Angle
- Connector 2: BNC Female Bulkhead
- Cable Type: RG188
- Coax Flex Type: Flexible

#### Features

- Max Frequency 1 GHz
- PTFE Jacket

#### Applications

- General Purpose
- Laboratory Use

#### Description

Pasternack's PE33575/HS MCX plug right angle to BNC female bulkhead cable using RG188 coax is part of our full line of RF components available for same-day shipping. Pasternack's flexible RF cable assemblies are ideal for applications where tight bends and flexure are required. This Pasternack MCX to BNC cable assembly has a plug to female gender configuration with 50 ohm flexible RG188 coax. The PE33575/HS MCX plug to BNC female cable assembly operates to 1 GHz. The right angle MCX interface on the RG188 cable allows for easier connections in tight spaces. Our RF cable assembly with BNC bulkhead interface allows designers to create external connections on their product enclosures, and can be used in a variety of other rack mount and panel mount applications.

Custom versions of most RF cable assemblies can be built and shipped same day. Custom cable assembly lengths can be obtained by specifying the desired length on the web site at time of order or by contacting a sales representative. Other available RF cable assembly value added services include connector orientation or clocking, heat shrink booting and custom labeling. RF testing can also be performed to document the electrical performance of your cable assembly.

Click the following link (or enter part number in "SEARCH" on website) to obtain additional part information including price, inventory and certifications: [MCX Plug Right Angle to BNC Female Bulkhead Cable Using RG188 Coax with HeatShrink PE33575/HS](#)



MCX Plug Right Angle to BNC Female Bulkhead  
Cable Using RG188 Coax with HeatShrink

**RF Cable Assemblies Technical Data Sheet**

**PE33575/HS**

**Electrical Specifications**

| Description            | Minimum | Typical | Maximum | Units |
|------------------------|---------|---------|---------|-------|
| Frequency Range        | DC      |         | 1,000   | MHz   |
| VSWR                   |         |         | 1.5:1   |       |
| Operating Voltage (AC) |         |         | 250     | Vrms  |

**Specifications by Frequency**

| Description           | F1    | F2   | F3    | F4   | F5    | Units |
|-----------------------|-------|------|-------|------|-------|-------|
| Frequency             | 50    | 100  | 250   | 500  | 1,000 | MHz   |
| Insertion Loss (Typ.) | 0.025 | 0.05 | 0.125 | 0.25 | 0.5   | dB/ft |
|                       | 0.08  | 0.16 | 0.41  | 0.82 | 1.64  |       |

**Electrical Specification Notes:**

Insertion Loss does not include the loss of the connectors. Insertion Loss is estimated as  $0.05 \times \sqrt{f(\text{GHz})}$  dB for the right angle connector and 0.1 dB for the straight connector.

**Mechanical Specifications**

**Cable Assembly**

Weight 0.065 lbs [29.48 g]

**Cable**

Cable Type RG188  
 Impedance 50 Ohms  
 Inner Conductor Type Stranded  
 Inner Conductor Material and Plating Copper Clad Steel, Silver  
 Dielectric Type PTFE  
 Number of Shields 1  
 Shield Layer 1 Silver Plated Copper Braid  
 Jacket Material PTFE, White  
 Jacket Diameter 0.11 in [2.79 mm]

Click the following link (or enter part number in "SEARCH" on website) to obtain additional part information including price, inventory and certifications: [MCX Plug Right Angle to BNC Female Bulkhead Cable Using RG188 Coax with HeatShrink PE33575/HS](#)



MCX Plug Right Angle to BNC Female Bulkhead  
Cable Using RG188 Coax with HeatShrink

**RF Cable Assemblies Technical Data Sheet**

**PE33575/HS**

**Connectors**

| Description                   | Connector 1                  | Connector 2                 |
|-------------------------------|------------------------------|-----------------------------|
| Type                          | MCX Plug Right Angle Push-On | BNC Female Bulkhead Bayonet |
| Specification                 | CECC 22220                   |                             |
| Impedance                     | 50 Ohms                      | 50 Ohms                     |
| Contact Material and Plating  | Brass, Gold                  | Brass, Gold                 |
| Contact Plating Specification | 30 µin minimum               | 30 µin minimum              |
| Dielectric Type               | PTFE                         | PTFE                        |
| Body Material and Plating     | Brass, Nickel                | Brass, Nickel               |
| Body Plating Specification    | 100 µin minimum              | 100 µin minimum             |

**Environmental Specifications**

**Temperature**

Operating Range

-40 to +60 deg C

**Compliance Certifications** (see [product page](#) for current document)

**Plotted and Other Data**

Notes:

Click the following link (or enter part number in "SEARCH" on website) to obtain additional part information including price, inventory and certifications: [MCX Plug Right Angle to BNC Female Bulkhead Cable Using RG188 Coax with HeatShrink PE33575/HS](#)



# MCX Plug Right Angle to BNC Female Bulkhead Cable Using RG188 Coax with HeatShrink

## RF Cable Assemblies Technical Data Sheet

**PE33575/HS**

### How to Order

Part Number Configuration:

**PE33575/HS - xx uu**

Unit of Measure:  
 cm = Centimeters  
 <blank> = Inches  
 Length  
 Base Number

Example: PE33575/HS-12 = 12 inches long cable  
 PE33575/HS-100cm = 100 cm long cable

MCX Plug Right Angle to BNC Female Bulkhead Cable Using RG188 Coax with HeatShrink from Pasternack Enterprises has same day shipment for domestic and International orders. Our RF, microwave and millimeter wave products maintain a 99.4% availability and are part of the broadest selection in the industry.

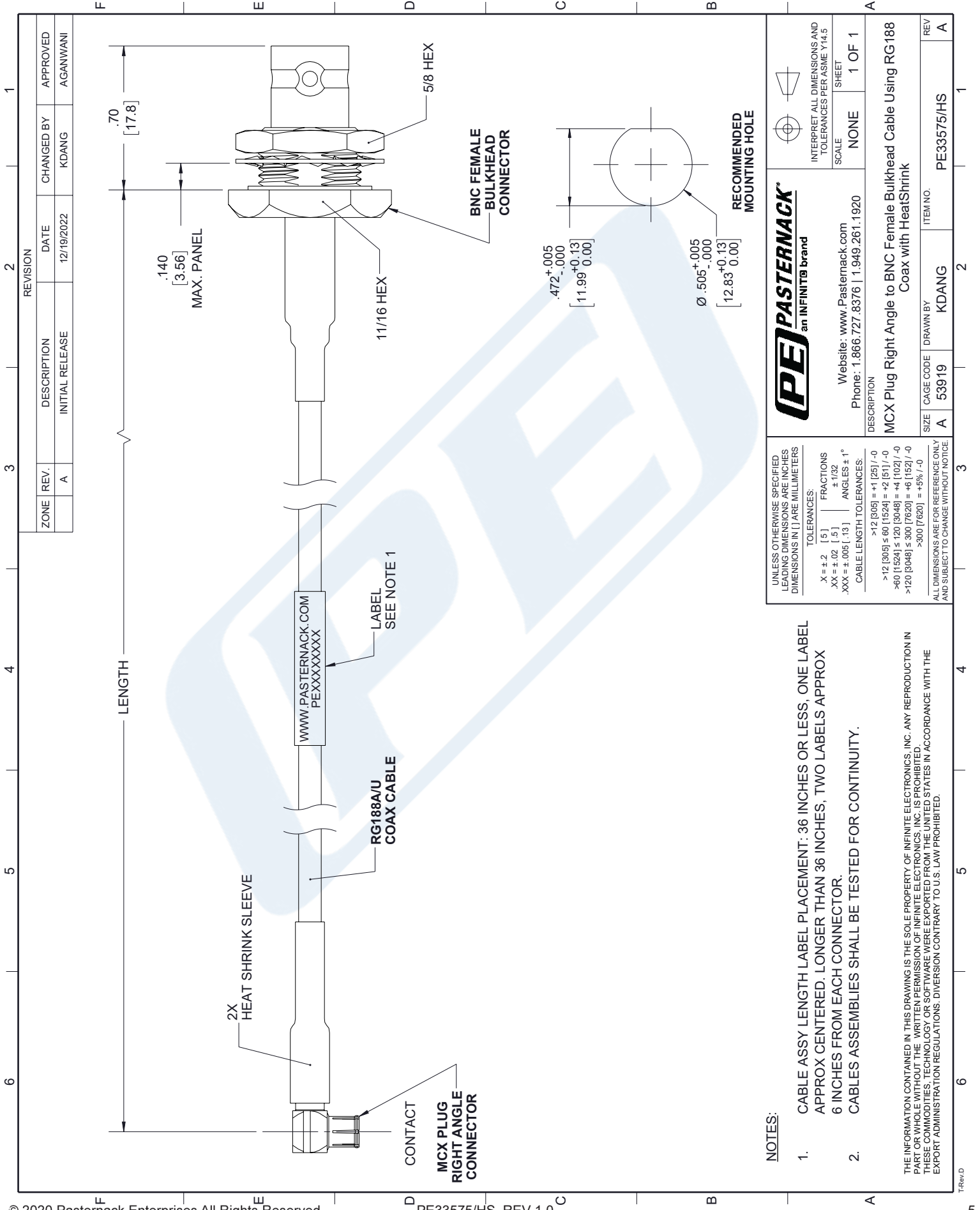
Click the following link (or enter part number in "SEARCH" on website) to obtain additional part information including price, inventory and certifications: [MCX Plug Right Angle to BNC Female Bulkhead Cable Using RG188 Coax with HeatShrink PE33575/HS](#)

URL: <https://www.pasternack.com/mcx-plug-right-angle-to-bnc-female-bulkhead-cable-using-rg188-with-heatshrink-pe33575-hs-p.aspx>

The information contained in this document is accurate to the best of our knowledge and representative of the part described herein. It may be necessary to make modifications to the part and/or the documentation of the part, in order to implement improvements. Pasternack reserves the right to make such changes as required. Unless otherwise stated, all specifications are nominal. Pasternack does not make any representation or warranty regarding the suitability of the part described herein for any particular purpose, and Pasternack does not assume any liability arising out of the use of any part or documentation.

# PE33575/HS CAD Drawing

## MCX Plug Right Angle to BNC Female Bulkhead Cable Using RG188 Coax with HeatShrink



**NOTES:**

1. CABLE ASSY LENGTH LABEL PLACEMENT: 36 INCHES OR LESS, ONE LABEL APPROX CENTERED. LONGER THAN 36 INCHES, TWO LABELS APPROX 6 INCHES FROM EACH CONNECTOR.
2. CABLES ASSEMBLIES SHALL BE TESTED FOR CONTINUITY.

THE INFORMATION CONTAINED IN THIS DRAWING IS THE SOLE PROPERTY OF INFINITE ELECTRONICS, INC. ANY REPRODUCTION IN PART OR WHOLE WITHOUT THE WRITTEN PERMISSION OF INFINITE ELECTRONICS, INC. IS PROHIBITED. THESE COMMODITIES, TECHNOLOGY OR SOFTWARE WERE EXPORTED FROM THE UNITED STATES IN ACCORDANCE WITH THE EXPORT ADMINISTRATION REGULATIONS. DIVERSION CONTRARY TO U.S. LAW PROHIBITED.

|  |  |
|--|--|
| UNLESS OTHERWISE SPECIFIED LEADING DIMENSIONS ARE INCHES DIMENSIONS IN [ ] ARE MILLIMETERS |  |
| TOLERANCES:  | FRACTIONS                                |
| X = ± 2 [ 5 ]  | ± 1/32                                   |
| .XX = ± .02 [ .5 ]   | ANGLES ± 1°                              |
| .XXX = ± .005 [ .13 ]  | CABLE LENGTH TOLERANCES:                 |
|  | >12 [305] = +1 [25] / -0                 |
|  | >12 [305] ≤ 60 [1524] = +2 [51] / -0     |
|  | >60 [1524] ≤ 120 [3048] = +4 [102] / -0  |
|  | >120 [3048] ≤ 300 [7620] = +6 [152] / -0 |
|  | >300 [7620] = +5% / -0                   |
| ALL DIMENSIONS ARE FOR REFERENCE ONLY AND SUBJECT TO CHANGE WITHOUT NOTICE                 |  |

**PASTERNAK**  
an INFINITIB brand

Website: [www.Pasternack.com](http://www.Pasternack.com)  
Phone: 1.866.727.8376 | 1.949.261.1920

INTERPRET ALL DIMENSIONS AND TOLERANCES PER ASME Y14.5

SCALE: NONE

SHEET: 1 OF 1

|             |  |          |            |
|-------------|--|----------|------------|
| DESCRIPTION | MCX Plug Right Angle to BNC Female Bulkhead Cable Using RG188 Coax with HeatShrink |          |            |
| SIZE        | CAGE CODE  | DRAWN BY | ITEM NO.   |
| A           | 53919  | KDANG    | PE33575/HS |
| REV         |  |          | A          |