



BNC Female to MCX Plug Right Angle Cable Using RG174 Coax , LF Solder

RF Cable Assemblies Technical Data Sheet

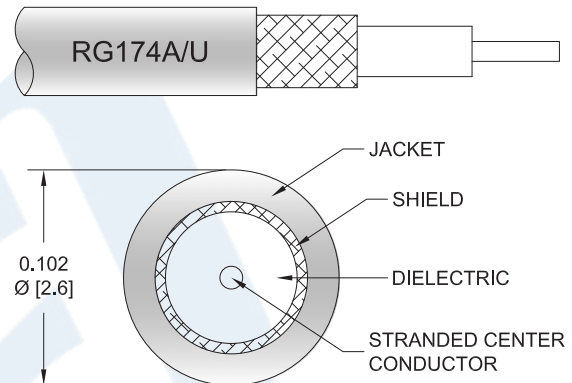
PE33461LF

Configuration

- Connector 1: BNC Female
- Connector 2: MCX Plug Right Angle
- Cable Type: RG174

Features

- Max Frequency 1 GHz
- 66% Phase Velocity
- PVC Jacket



Applications

- General Purpose
- Laboratory Use

Description

Pasternack's PE33461LF BNC female to MCX plug right angle cable using RG174 coax is part of our full line of RF components available for same-day shipping. Pasternack's flexible RF cable assemblies are ideal for applications where tight bends and flexure are required. This Pasternack BNC to MCX cable assembly has a female to plug gender configuration with 50 ohm flexible RG174 coax. The PE33461LF BNC female to MCX plug cable assembly operates to 1 GHz. The right angle MCX interface on the RG174 cable allows for easier connections in tight spaces.

Custom versions of most RF cable assemblies can be built and shipped same day. Custom cable assembly lengths can be obtained by specifying the desired length on the web site at time of order or by contacting a sales representative. Other available RF cable assembly value added services include connector orientation or clocking, heat shrink booting and custom labeling. RF testing can also be performed to document the electrical performance of your cable assembly.

Click the following link (or enter part number in "SEARCH" on website) to obtain additional part information including price, inventory and certifications: [BNC Female to MCX Plug Right Angle Cable Using RG174 Coax , LF Solder PE33461LF](#)



BNC Female to MCX Plug Right Angle Cable Using RG174 Coax , LF Solder

RF Cable Assemblies Technical Data Sheet

PE33461LF

Electrical Specifications

Description	Minimum	Typical	Maximum	Units
Frequency Range	DC		1,000	MHz
VSWR			1.4:1	
Velocity of Propagation		66		%
Capacitance		31.08 [101.97]		pF/ft [pF/m]

Specifications by Frequency

Description	F1	F2	F3	F4	F5	Units
Frequency	100	250	400	500	1,000	MHz
Insertion Loss (Typ.)	0.084	0.123	0.19	0.211	0.32	dB/ft
	0.28	0.4	0.62	0.69	1.05	dB/m

Electrical Specification Notes:

Insertion Loss does not include the loss of the connectors. Insertion Loss is estimated as 0.1 dB for the straight connector and 0.2 dB for the right angle connector.

Mechanical Specifications

Cable Assembly

Weight 0.039 lbs [17.69 g]

Cable

Cable Type RG174
 Impedance 50 Ohms
 Inner Conductor Type Stranded
 Inner Conductor Material and Plating Copper Clad Steel
 Dielectric Type PE
 Number of Shields 1
 Shield Layer 1 Tinned Copper Braid
 Jacket Material PVC, Black
 Jacket Diameter 0.11 in [2.79 mm]

Click the following link (or enter part number in "SEARCH" on website) to obtain additional part information including price, inventory and certifications: [BNC Female to MCX Plug Right Angle Cable Using RG174 Coax , LF Solder PE33461LF](#)



BNC Female to MCX Plug Right Angle Cable
Using RG174 Coax , LF Solder

RF Cable Assemblies Technical Data Sheet

PE33461LF

Connectors

Description	Connector 1	Connector 2
Type	BNC Female	MCX Plug Right Angle
Specification	MIL-STD-348A	CECC 22220
Impedance	50 Ohms	50 Ohms
Contact Material and Plating	Brass, Gold	Brass, Gold
Contact Plating Specification	30 µin minimum	30 µin minimum
Dielectric Type	PTFE	PTFE
Body Material and Plating	Brass, Nickel	Brass, Nickel
Body Plating Specification	100 µin minimum	100 µin minimum

Environmental Specifications

Temperature

Operating Range

-40 to +60 deg C

Compliance Certifications (see [product page](#) for current document)

Plotted and Other Data

Notes:

Click the following link (or enter part number in "SEARCH" on website) to obtain additional part information including price, inventory and certifications: [BNC Female to MCX Plug Right Angle Cable Using RG174 Coax , LF Solder PE33461LF](#)



BNC Female to MCX Plug Right Angle Cable
Using RG174 Coax , LF Solder

RF Cable Assemblies Technical Data Sheet

PE33461LF

How to Order

Part Number Configuration:

PE33461LF - xx uu

Unit of Measure:
cm = Centimeters
<blank> = Inches
Length
Base Number

Example: PE33461LF-12 = 12 inches long cable
PE33461LF-100cm = 100 cm long cable

BNC Female to MCX Plug Right Angle Cable Using RG174 Coax , LF Solder from Pasternack Enterprises has same day shipment for domestic and International orders. Our RF, microwave and millimeter wave products maintain a 99.4% availability and are part of the broadest selection in the industry.

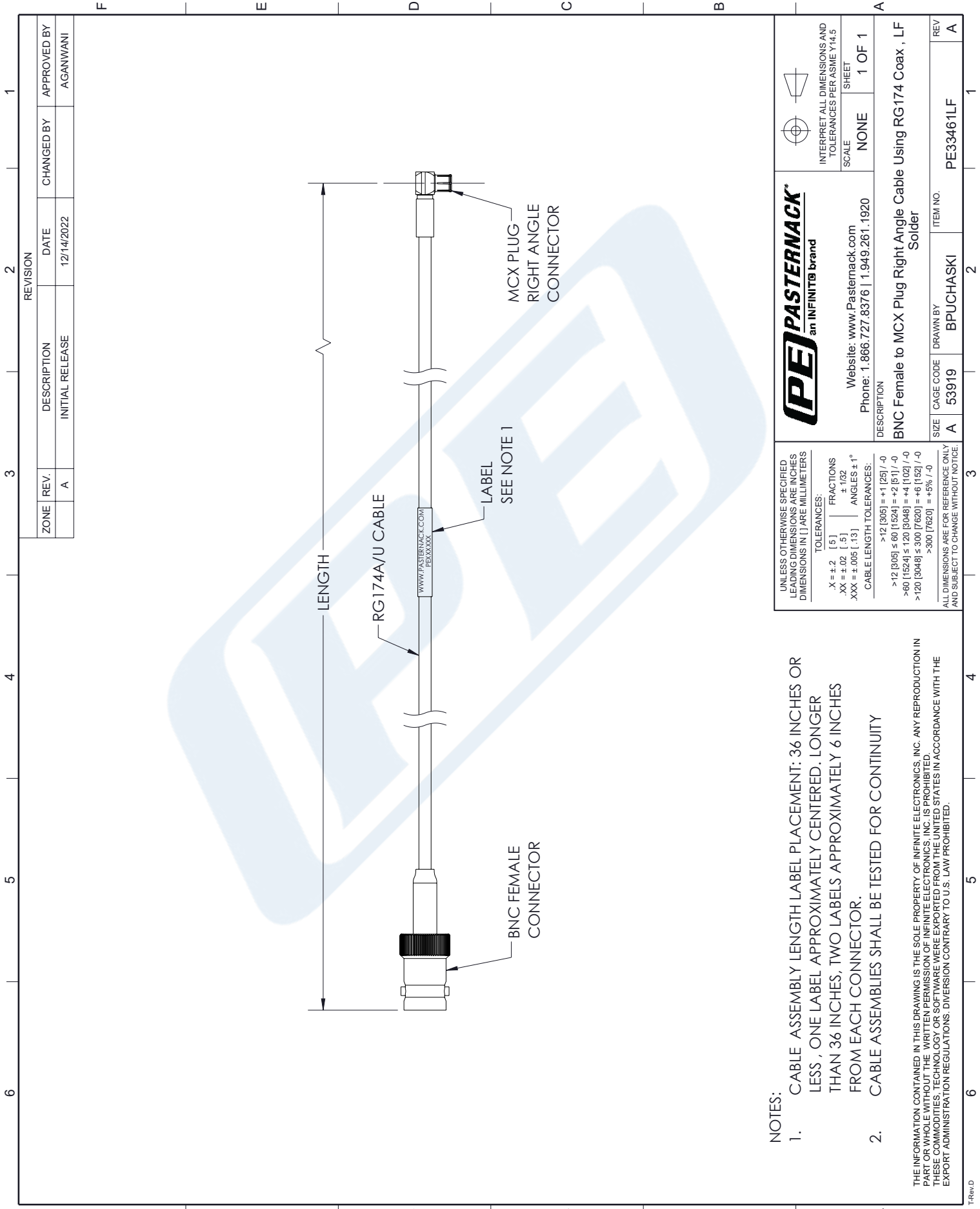
Click the following link (or enter part number in "SEARCH" on website) to obtain additional part information including price, inventory and certifications: [BNC Female to MCX Plug Right Angle Cable Using RG174 Coax , LF Solder PE33461LF](https://www.pasternack.com/bnc-female-to-mcx-plug-right-angle-cable-using-rg174-coax-lf-solder-pe33461lf-p.aspx)

URL: <https://www.pasternack.com/bnc-female-to-mcx-plug-cable-using-rg174-lf-solder-pe33461lf-p.aspx>

The information contained in this document is accurate to the best of our knowledge and representative of the part described herein. It may be necessary to make modifications to the part and/or the documentation of the part, in order to implement improvements. Pasternack reserves the right to make such changes as required. Unless otherwise stated, all specifications are nominal. Pasternack does not make any representation or warranty regarding the suitability of the part described herein for any particular purpose, and Pasternack does not assume any liability arising out of the use of any part or documentation.

PE33461LF CAD Drawing

BNC Female to MCX Plug Right Angle Cable Using RG174 Coax , LF Solder



NOTES:

1. CABLE ASSEMBLY LENGTH LABEL PLACEMENT: 36 INCHES OR LESS , ONE LABEL APPROXIMATELY CENTERED . LONGER THAN 36 INCHES, TWO LABELS APPROXIMATELY 6 INCHES FROM EACH CONNECTOR.
2. CABLE ASSEMBLIES SHALL BE TESTED FOR CONTINUITY

THE INFORMATION CONTAINED IN THIS DRAWING IS THE SOLE PROPERTY OF INFINITE ELECTRONICS, INC. ANY REPRODUCTION IN PART OR WHOLE WITHOUT THE WRITTEN PERMISSION OF INFINITE ELECTRONICS, INC. IS PROHIBITED. THESE COMMODITIES, TECHNOLOGY OR SOFTWARE WERE EXPORTED FROM THE UNITED STATES IN ACCORDANCE WITH THE EXPORT ADMINISTRATION REGULATIONS. DIVERSION CONTRARY TO U.S. LAW PROHIBITED.

UNLESS OTHERWISE SPECIFIED LEADING DIMENSIONS ARE INCHES DIMENSIONS IN [] ARE MILLIMETERS	
TOLERANCES:	
X = ±.2 [.5]	FRACTIONS ± 1/32
.XX = ±.02 [.5]	ANGLES ± 1°
XXX = ±.005 [.13]	
CABLE LENGTH TOLERANCES:	
>12 [305]	±.1 [25] / -0
>60 [1524]	±.2 [51] / -0
>120 [3048]	±.4 [102] / -0
>300 [7620]	±.6 [152] / -0
ALL DIMENSIONS ARE FOR REFERENCE ONLY AND SUBJECT TO CHANGE WITHOUT NOTICE.	

PE PASTERNAK an INFINITO brand		INTERPRET ALL DIMENSIONS AND TOLERANCES PER ASME Y14.5	
Website: www.Pasternack.com		SCALE	SHEET
Phone: 1.866.727.8376 1.949.261.1920		NONE	1 OF 1
DESCRIPTION BNC Female to MCX Plug Right Angle Cable Using RG174 Coax , LF Solder			
SIZE	CAGE CODE	DRAWN BY	ITEM NO.
A	53919	BPUCHASKI	PE33461LF
			REV A