



10 MHz to 40 GHz 2.92mm Bias Tee Rated to 250 mA and 16 Volts DC

Bias Tees Technical Data Sheet

PE1621

Configuration

Design	Broadband
RF Port Connector	2.92mm Female
DC/RF Port Connector	2.92mm Female
DC Port Connector	Pin

Electrical Specifications

Description	Minimum	Typical	Maximum	Units
Frequency Range	0.01		40	GHz
Impedance		50		Ohms
VSWR		1.6:1	2:1	
Insertion Loss		1.5	1.8	dB
DC Voltage			16	Vdc
DC Current			250	mA

Mechanical Specifications

Size

Weight	0.0325 lbs [14.74 g]
--------	----------------------

Environmental Specifications

Temperature

Operating Range	-40 to +85 deg C
Storage Range	-55 to +125 deg C

Humidity	MIL-STD-202G
Shock	MIL-STD-202G
Vibration	MIL-STD-202G

Compliance Certifications (see [product page](#) for current document)

Plotted and Other Data

Notes:

Click the following link (or enter part number in "SEARCH" on website) to obtain additional part information including price, inventory and certifications: [10 MHz to 40 GHz 2.92mm Bias Tee Rated to 250 mA and 16 Volts DC PE1621](#)

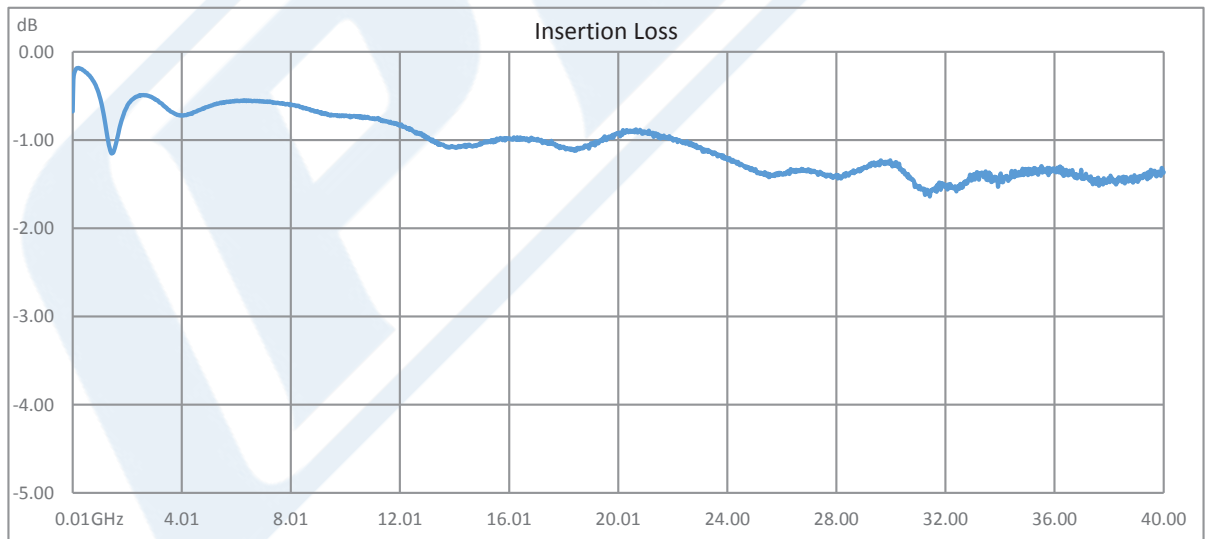
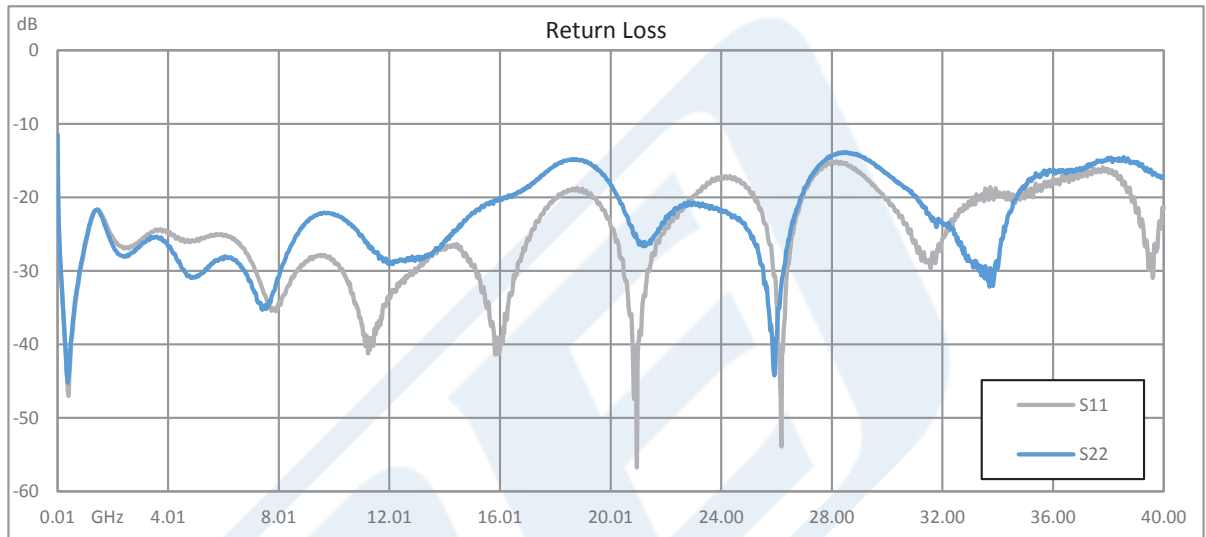


10 MHz to 40 GHz 2.92mm Bias Tee Rated to 250 mA and 16 Volts DC

Bias Tees Technical Data Sheet

PE1621

Typical Performance Data



Click the following link (or enter part number in "SEARCH" on website) to obtain additional part information including price, inventory and certifications: [10 MHz to 40 GHz 2.92mm Bias Tee Rated to 250 mA and 16 Volts DC PE1621](#)



10 MHz to 40 GHz 2.92mm Bias Tee Rated
to 250 mA and 16 Volts DC

Bias Tees Technical Data Sheet

PE1621

10 MHz to 40 GHz 2.92mm Bias Tee Rated to 250 mA and 16 Volts DC from Pasternack Enterprises has same day shipment for domestic and International orders. Our RF, microwave and millimeter wave products maintain a 99.4% availability and are part of the broadest selection in the industry.

Click the following link (or enter part number in "SEARCH" on website) to obtain additional part information including price, inventory and certifications: [10 MHz to 40 GHz 2.92mm Bias Tee Rated to 250 mA and 16 Volts DC PE1621](https://www.pasternack.com/10-mhz-40-ghz-2.92mm-bias-tee-250-ma-16-volts-dc-pe1621-p.aspx)

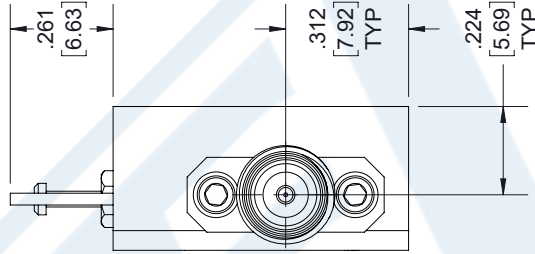
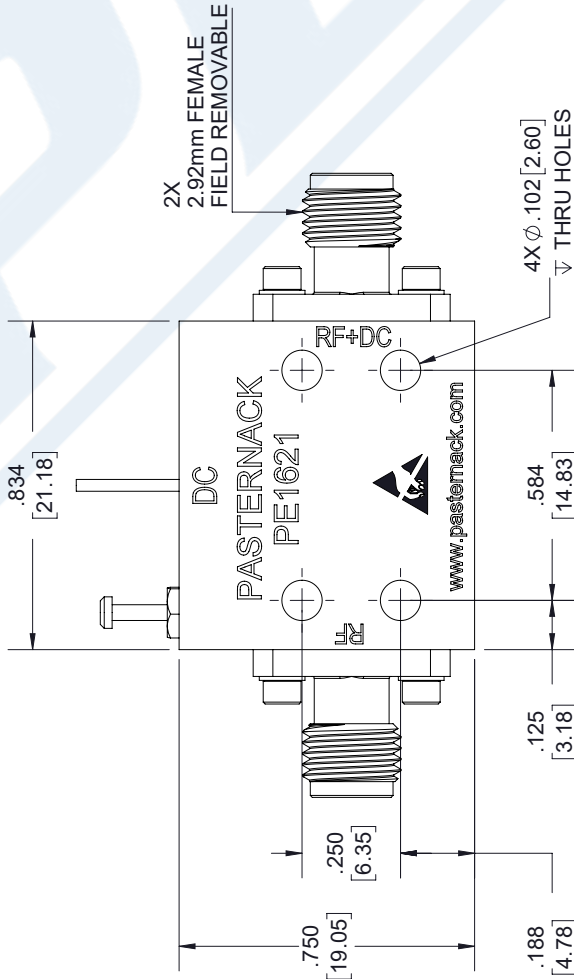
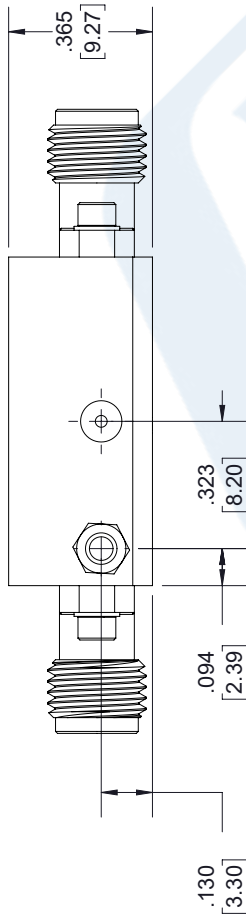
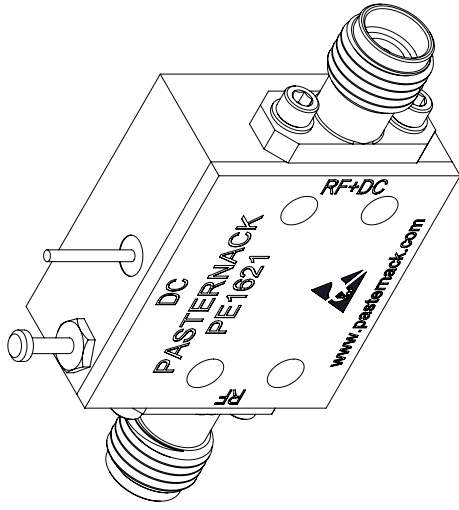
URL: <https://www.pasternack.com/10-mhz-40-ghz-2.92mm-bias-tee-250-ma-16-volts-dc-pe1621-p.aspx>

The information contained in this document is accurate to the best of our knowledge and representative of the part described herein. It may be necessary to make modifications to the part and/or the documentation of the part, in order to implement improvements. Pasternack reserves the right to make such changes as required. Unless otherwise stated, all specifications are nominal. Pasternack does not make any representation or warranty regarding the suitability of the part described herein for any particular purpose, and Pasternack does not assume any liability arising out of the use of any part or documentation.

PE1621 CAD Drawing

10 MHz to 40 GHz 2.92mm Bias Tee Rated to 250 mA and 16 Volts DC

REVISIONS		
REV.	DESCRIPTION	DATE
A	INITIAL RELEASE	6/4/2020
		APPROVED T. GALLA



UNLESS OTHERWISE SPECIFIED LEADING DIMENSIONS ARE INCHES DIMENSIONS IN [] ARE MILLIMETERS

TOLERANCES:
 .X = ±.2 [5.08] FRACTIONS ± 1/32
 .XX = ±.02 [.51] ANGLES ± 1°
 .XXX = ±.005 [.13] CABLE LENGTH (L) TOLERANCES:
 L ≤ 12 [305] = +1 [25] / -0
 12 [305] < L ≤ 60 [1524] = +2 [51] / -0
 60 [1524] < L ≤ 120 [3048] = +4 [102] / -0
 120 [3048] < L ≤ 300 [7620] = +6 [152] / -0
 300 [7620] < L = +5% / L / -0

ALL DIMENSIONS SHOWN ARE FOR REFERENCE ONLY.

PE PASTERNAK
 an INFINIT brand

Pasternack Enterprises, Inc.
 P. O. Box 16759, Irvine, CA 92623.
 Phone: 1.949.261.1920 | 1.866.727.8376
 Fax: 1.949.261.7451
 Website: www.pasternack.com
 E-mail: sales@pasternack.com

ITEM NO. PE1621

THIRD-ANGLE PROJECTION	1	OF	1
SCALE	N/A		
REV	A		

THESE COMMODITIES, TECHNOLOGY OR SOFTWARE WERE EXPORTED FROM THE UNITED STATES IN ACCORDANCE WITH THE EXPORT ADMINISTRATION REGULATIONS. DIVERSION CONTRARY TO U.S. LAW PROHIBITED.